

vifa

**OSLO**

*Brugermanual - Model: VIFA060*

*ENGLISH*

# IMPORTANT STATEMENTS:

This device complies with Part 15 of the FCC Rules. Its operation is subject to the following two conditions:

1. This device may not cause harmful interference, and
2. This device must accept any interference received, including interference that may cause undesired operation.

Cet appareil est conforme à la section 15 des réglementations de la FCC. Le fonctionnement de l'appareil est sujet aux deux conditions suivantes:

1. Cet appareil ne doit pas provoquer d'interférences néfastes, et 2. Cet appareil doit tolérer les interférences reçues, y compris celles qui risquent de provoquer un fonctionnement indésirable.

Note:

This product has been tested and found to comply with the limits for a Class B digital device, pursuant to Part 15 of the FCC Rules. These limits are designed to provide reasonable protection against harmful interference in a residential installation. This product generates, uses, and can radiate radio frequency energy and, if not installed and used in accordance with the instructions, may cause harmful interference to radio communications.

However, there is no guarantee that interference will not occur in a particular installation. If this product does cause harmful interference to radio or television reception, which can be determined by turning the equipment off and on, the user is encouraged to try to correct the interference by one or more of the following measures:

- Reorient or relocate the receiving antenna.
- Increase the separation between the equipment and receiver.
- Connect the equipment into an outlet on a circuit different from that to which the receiver is connected.
- Consult the dealer or an experienced radio/TV technician for help.

Changes or modifications not expressly approved by the party responsible for compliance could void the user's authority to operate the equipment.

This device complies with Industry Canada licence-exempt RSS standard(s).

Operation is subject to the following two conditions:

1. This device may not cause interference, and
2. This device must accept any interference, including interference that may cause undesired operation of the device.

Le présent appareil est conforme aux CNR d'Industrie Canada applicables aux appareils radio-exempt de licence. L'exploitation est autorisée aux deux conditions suivantes:

1. l'appareil ne doit pas produire de brouillage, et
2. l'utilisateur de l'appareil doit accepter tout brouillage radioélectrique subi, même si le brouillage est susceptible d'en compromettre le fonctionnement.

FCC/IC Radiation Exposure Statement

This equipment complies with FCC/IC RSS-102 radiation exposure limits set forth for an uncontrolled environment. This equipment should be installed and operated with minimum distance 20 cm between the radiator & your body.

Déclaration de la FCC et d'IC sur l'exposition aux radiations  
Cet appareil est conforme à la norme RSS102 de la FCC/IC relative aux limites d'exposition aux radiations dans un environnement non contrôlé. Vous devez installer et utiliser cet appareil en respectant une distance minimale de 20 cm entre votre corps et l'élément rayonnant.

Vifa Denmark A/S  
Mariendalsvej 2A  
DK - 8800 Viborg  
vifa.dk

The complete EU Declaration of Conformity can be downloaded from: [www.vifa.dk/support](http://www.vifa.dk/support)

Firmware version:  
Equal or later than System2.0.3 and BT/2.3

# IMPORTANT SAFETY INSTRUCTIONS

## Regulatory Safety Information

- 1 Read these instructions.
  - 2 Keep these instructions.
  - 3 Heed all warnings.
  - 4 Follow all instructions.
  - 5 Do not use this apparatus near water.
  - 6 Clean only with dry cloth.
  - 7 Do not block any ventilation openings. Install in accordance with the manufacturer's instructions.
  - 8 Do not install near any heat sources such as radiators, heat registers, stoves, or other apparatus (including amplifiers) that produce heat.
  - 9 Do not defeat the safety purpose of the polarized or grounding-type plug. A polarized plug has two blades with one wider than the other. A grounding type plug has two blades and a third grounding prong. The wide blade or the third prong are provided for your safety. If the provided plug does not fit into your outlet consult an electrician for replacement of the obsolete outlet.
  - 10 Protect the power cord from being walked on or pinched particularly at plugs convenience receptacles and the point where they exit from the apparatus.
  - 11 Only use attachments/accessories specified by the manufacturer.
  - 12 Use only with the cart, stand, tripod, bracket or table specified by the manufacturer or sold with the apparatus. When a cart is used, use caution when moving the cart/apparatus combination to avoid injury from tip-over.
  - 13 Unplug this apparatus during lightning storms or when unused for long periods of time.
  - 14 Refer all servicing to qualified service personnel. Servicing is required when the apparatus has been damaged in any way, such as power-supply cord or plug is damaged, liquid has been spilled or objects have fallen into the apparatus, the apparatus has been exposed to rain or moisture, does not operate normally or has been dropped.
  - 15 To completely disconnect unit power from the AC mains, disconnect the unit's power cord from the mains socket.
  - 16 Important! This equipment is not intended to be used on soft supportlike beddings. Blankets etc.)
  - 17 The socket-outlet shall be easily accessible.
  - 18 Disposal of a battery into fire or a hot oven, or mechanically crushing or cutting of a battery can result in an explosion
  - 19 High or low extreme temperatures that a battery can be subjected to during use is 10°C - 45°C, storage -20°C - 40°C or transportation 10°C - 45°C; and low air pressure is 86-106Kpa at 2000m. high altitude.
  - 20 Leaving a battery in an extremely high temperature surrounding environment that can result in an explosion or the leakage of flammable liquid or gas.
  - 21 Battery subjected to extremely low air pressure that may result in an explosion or the leakage of flammable liquid or gas.
  - 22 Product label affixed to the bottom of the product.
  - 23 **CAUTION:** Danger of explosion if battery is incorrectly replaced. Replace only with the same or equivalent type.
  - 24 **WARNING:** The Battery (battery pack or batteries installed) shall not be exposed to excessive heat such as sunshine, fire or the like.
  - 25 **WARNING:** The main plug shall remain readily operable.
  - 26 Keep minimum distances 1cm around the apparatus for sufficient ventilation.
  - 27 The ventilation should not be impeded by covering the ventilation openings with items, such as newspapers, table-cloths, curtains, etc.
  - 28 Attention should be drawn to the environmental aspects of battery disposal.
  - 29 The use of apparatus in tropical and/or moderate climates.
  - 30 Risk of explosion if the battery is replaced by an incorrect type.
- WARNING:**
- To reduce the risk of fire and electric shock do not expose this apparatus to rain or moisture.
  - Do not place objects filled with liquids such as vases on the apparatus.
  - Do not open apparatus. There are no user-serviceable parts inside. Risk of electric shock inside.
  - The apparatus shall not be exposed to dripping or splashing.
  - No naked flame sources, such as lighted candles, such as lighted candles, should be placed on the apparatus.



The maximum ambient temperature should not exceed 40°C.

Vifa Denmark A/S hereby declares that the product Oslo (VIFA060), which contains Bluetooth radio transceiver, is in compliance with EU directive 2014/53/EU (RED).

The radiated power for RF frequency range 2402-2480MHz is less than 10dBm.



The lightning flash and arrow head within the triangle is a warning sign alerting you of dangerous voltage inside the product



The exclamation point within the triangle is a warning sign alerting you of important instructions accompanying the product.

## *Tillykke med dit valg*

Vifa Oslo. En højtaler for enhver, som sætter pris på nordisk design og autentisk lyd.

Produktet er designet til at være intuitivt at bruge, og denne vejledning gennemgår kun detaljerne - for eksempel hvordan du hurtigt opretter trådløs forbindelse.

God fornøjelse!

Produktpleje..... 6

### **Oslo-funktioner**

Knapper og indikatorer på Oslo ..... 8

Statusknap & statusindikator..... 9

Batteriopladning..... 10

### **Tilslutning til Oslo**

Tilslutning med *Bluetooth*<sup>®</sup>..... 12

Tilslutning med *Bluetooth*<sup>®</sup> - NFC ..... 13

Kabeltilslutning ..... 14

### **Fejlfinding**

Gendannelse af fabriksindstillinger..... 16

Nulstilling af Oslo..... 17

Support..... 18

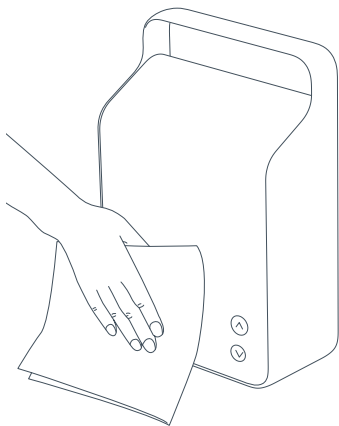
Varemærker ..... 18

Specifikationer..... 19



For manualer på andre sprog, besøg venligst [www.vifa.dk/support](http://www.vifa.dk/support)

## PRODUKTPLEJE



## OSLO FUNKTIONER

Oslo er bygget til langvarig anvendelse. For at sikre kvaliteten i musikgengivelsen må højttaleren ikke udsættes for regn, fugt, høj luftfugtighed eller varmekilder, der kan beskadige produktet. Den påtænkte brug ligger inden for et temperaturområde på 5 - 40°C (40 til 105°F).

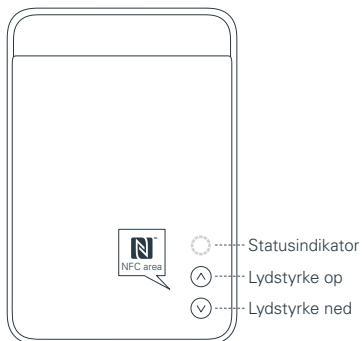
### **Rengøring**

Dit Vifa -produkt er dækket af smukt, meget holdbart tekstil fra Kvadrat. Fjern ikke-fedtede pletter ved at duppe forsigtigt med en fnugfri klud eller brug en fnugrulle til at fjerne fnug fra tekstilet.

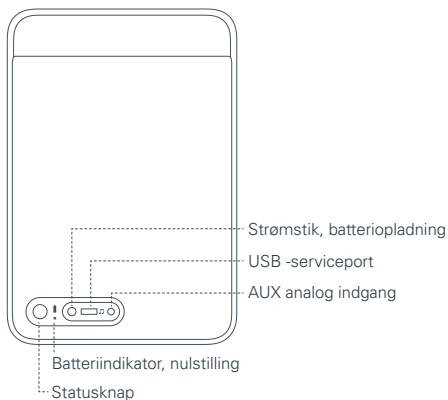


*Brug aldrig en støvsuger, da den kan beskadige højttalerenhederne bag tekstilet.*

## KNAPPER OG INDIKATORER PÅ OSLO



Statusindikator  
Lydstyrke op  
Lydstyrke ned



Strømskik, batterioplading  
USB -serviceport  
AUX analog indgang  
Batteriindikator, nulstilling  
Statusknap

## STATUSKNAP OG STATUSINDIKATOR

### Tænd Oslo

Tryk og hold på Statusknappen, indtil statusindikatoren tænder.

### Sluk Oslo

Tryk og hold på Statusknappen, indtil statusindikatoren blinker GULT. Slip derefter.

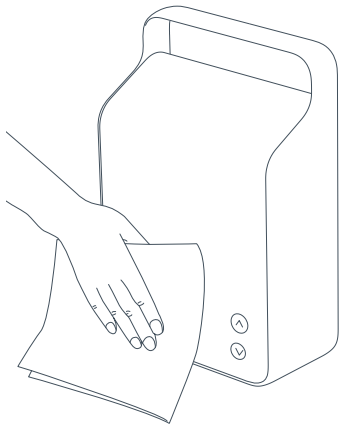
### Oslo DVALE-tilstand

Hvis der ikke modtages noget signal, eller der ikke trykkes på nogen knap i 3 minutter, skifter Oslo til DVALE -tilstand og statusindikatoren vil pulsere.

### Statusindikator

- BLÅ – *Bluetooth*-forbindelse
- GRØN – *AUX*-forbindelse
- RØD - Advarselsindikationer
- GUL - Ingen aktive forbindelser

## BATTERIOPLADNING



## TILSLUTNING TIL OSLO

Det tager 3-4 timer at lade batteriet helt op. Oslo bør oplades i over 4 timer, første gang du oplader den.

Under opladningen kan du se status.



### Lav

Batteriniveau under 5% RØD



### Medium

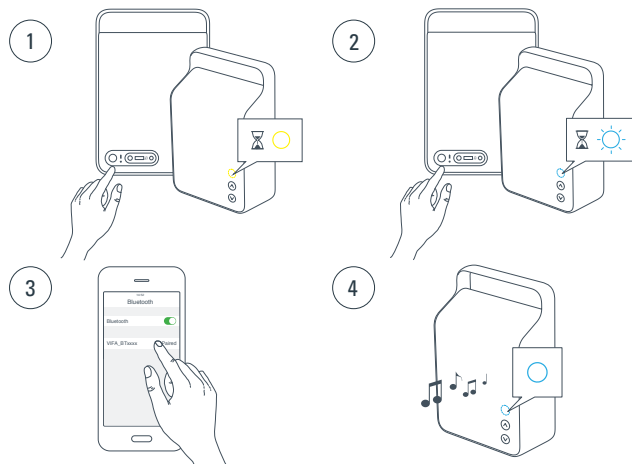
Batteriniveau mellem 5% og 80% GUL



### Fuld

Batteriniveau over 80% GRØN

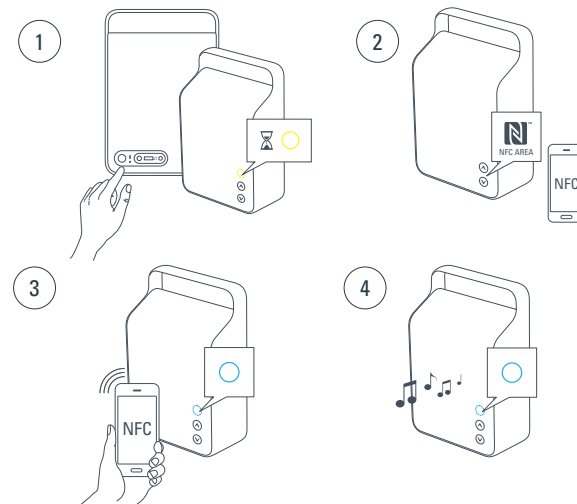
## TILSLUTNING MED *BLUETOOTH*<sup>®</sup>



1. Tænd for Oslo ved at trykke på Statusknappen og holde den inde, indtil statusindikatoren tænder.
2. Tryk på Statusknappen og hold den inde, indtil statusindikatoren blinker BLÅT.
3. Aktivér *Bluetooth*-parring på din enhed, og vælg Vifa BTxxxxx som din *Bluetooth*-enhed.
4. Statusindikatoren lyser konstant BLÅT, når forbindelse er oprettet. Lad musikken spille.

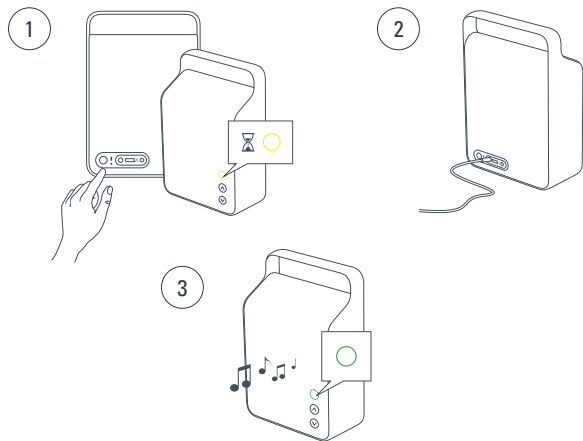
## TILSLUTNING MED *BLUETOOTH*<sup>®</sup> - NFC

Kun for NFC-aktiverede enheder



1. Tænd for Oslo ved at trykke på Statusknappen og holde den inde, indtil statusindikatoren tænder.
2. NFC-området på Oslo er placeret ved lydstyrkeknapperne.
3. Aktivér NFC-funktionen på din enhed. Placer den NFC-aktiverede enhed på NFC-området og acceptér parring på din enhed.
4. Statusindikatoren lyser konstant BLÅT, når forbindelse er oprettet. Lad musikken spille.

## KABELTILSLUTNING



1. Tænd for Helsinki ved at trykke på Statusknappen og holde den inde, indtil statusindikatoren lyser konstant.
2. Tilslut AUX kabel på bagsiden og start musikafspilningen på din enhed.
3. Statusindikatoren lyser konstant GRØNT, når kablet er tilsluttet.

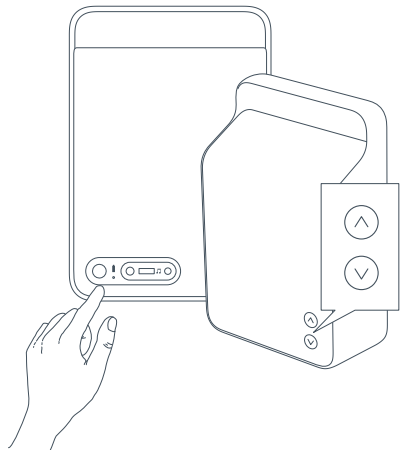


*Oslo prioriterer Bluetooth over AUX. Men hvis der kortvarigt trykkes på Statusknappen, skifter forbindelsen fra Bluetooth til AUX. Hvis der trykkes på den igen, skifter den tilbage til normal prioritet.*

## FEJLFINDING



## GENDANNELSE AF FABRIKSINDSTILLING



### Gendannelse af fabriksindstilling

Nulstiller Oslos software til fabriksindstillinger

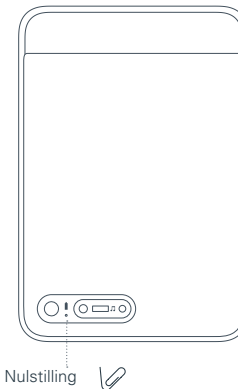
Gendan fabriksindstillingerne i Oslo ved samtidigt at trykke og holde Statusknappen og knapperne for lydstyrke op og lydstyrke ned inde, indtil statusindikatoren kortvarigt lyser RØDT, GRØNT og BLÅT.

Slip knapperne, og Oslo vil vende tilbage til fabriksindstillingerne. Bemærk, at efter gendannede fabriksindstillinger vil ALLE BRUGERINDSTILLINGER GÅ TABT.



For at opdatere Oslos firmware, besøg venligst [www.vifa.dk/support](http://www.vifa.dk/support) for yderligere information.

## NULSTILLING AF OSLO



### Nulstilling

Kan anvendes, hvis Oslo ikke reagerer.

For at nulstille Oslo, tryk kort på knappen for nulstilling. Oslo slukker herefter.

Ingen brugerindstillinger går tabt.



Hvis du kommer ud for problemer, der ikke er beskrevet i denne manual, henvises der til [www.vifa.dk/support](http://www.vifa.dk/support)

## REGISTRERING OG VAREMÆRKER

### Vifa App

Der kommer en app til din Vifa Oslo  
Der gives flere oplysninger på [www.vifa.dk/support](http://www.vifa.dk/support)

### Registrér din Oslo

Vi opfordrer til en registrering af dit produkt på [www.vifa.dk/support](http://www.vifa.dk/support)



The Bluetooth® word mark and logos are registered trademarks owned by Bluetooth SIG, Inc., and any use of such marks by Vifa Denmark A/S is under license. Other trademarks and trade names are those of their respective owners.



Qualcomm® aptX™

Qualcomm is a trademark of Qualcomm Incorporated, registered in the United States and other countries. aptX is a trademark of Qualcomm Technologies International, Ltd., registered in the United States and other countries.



The N-Mark is a trademark or registered trademark of NFC Forum, Inc. in the United States and in other countries.

## SPECIFIKATIONER

Beskrivelse	Bærbart trådløst højttaler
Tekniske data	<i>Bluetooth®</i> Wireless Technology Qualcomm® aptX™ audio AUX 3,5 mm mini-jack NFC Lithium-ion-batteri Mekanisk balancerede bashøjttalere DSP- crossover, optimeret til lav forvrængning og høj præcision 4-kanals digital PurePath-forstærker
Fuldtoneenhed	2 x 50 mm Vifa enhed med aluminium-membran og neodymium-magnet
Basenhed	2 x 65 mm Vifa enheder med flad sandwich-membran og neodymium- magnet. Monteret i mekanisk balanceret konfiguration understøttet af 2 passive slave enheder.
Frekvensrespons	55 Hz - 18 kHz @ +/- 3 dB
Indgangsspænding, DC-adaptor	100 Volt - 240 Volt 50/60 Hz 1500mA maks
Indgangsspænding, højttaler Standbyforbrug	18VDC, 2500mA Mindre end 0,5 watt, når batteriet er fuldt opladet.
Indgange	<i>Bluetooth®</i> Wireless Technology Qualcomm® aptX™ audio AUX 3.5 mm mini-jack.
Mål Højde/Bredde/Dybde	268 mm / 181 mm / 90 mm
Nettovægt	2,4 kg
Ramme	I én del støbt aluminium
Kabinet	Polycarbonat
Frontstof	Specialvævet Kvadrat tekstil

Du kan få flere oplysninger på vores website på

[www.vifa.dk](http://www.vifa.dk)