

vifa

OSLO

Bruksanvisning - Model: VIFA060

NORSK

IMPORTANT STATEMENTS:

This device complies with Part 15 of the FCC Rules. Its operation is subject to the following two conditions:

1. This device may not cause harmful interference, and
2. This device must accept any interference received, including interference that may cause undesired operation.

Cet appareil est conforme à la section 15 des réglementations de la FCC. Le fonctionnement de l'appareil est sujet aux deux conditions suivantes:

1. Cet appareil ne doit pas provoquer d'interférences néfastes, et 2. Cet appareil doit tolérer les interférences reçues, y compris celles qui risquent de provoquer un fonctionnement indésirable.

Note:

This product has been tested and found to comply with the limits for a Class B digital device, pursuant to Part 15 of the FCC Rules. These limits are designed to provide reasonable protection against harmful interference in a residential installation. This product generates, uses, and can radiate radio frequency energy and, if not installed and used in accordance with the instructions, may cause harmful interference to radio communications.

However, there is no guarantee that interference will not occur in a particular installation. If this product does cause harmful interference to radio or television reception, which can be determined by turning the equipment off and on, the user is encouraged to try to correct the interference by one or more of the following measures:

- Reorient or relocate the receiving antenna.
- Increase the separation between the equipment and receiver.
- Connect the equipment into an outlet on a circuit different from that to which the receiver is connected.
- Consult the dealer or an experienced radio/TV technician for help.

Changes or modifications not expressly approved by the party responsible for compliance could void the user's authority to operate the equipment.

This device complies with Industry Canada licence-exempt RSS standard(s).

Operation is subject to the following two conditions:

1. This device may not cause interference, and
2. This device must accept any interference, including interference that may cause undesired operation of the device.

Le présent appareil est conforme aux CNR d'Industrie Canada applicables aux appareils radio-exempt de licence. L'exploitation est autorisée aux deux conditions suivantes:

1. l'appareil ne doit pas produire de brouillage, et
2. l'utilisateur de l'appareil doit accepter tout brouillage radioélectrique subi, même si le brouillage est susceptible d'en compromettre le fonctionnement.

FCC/IC Radiation Exposure Statement

This equipment complies with FCC/IC RSS-102 radiation exposure limits set forth for an uncontrolled environment. This equipment should be installed and operated with minimum distance 20 cm between the radiator & your body.

Déclaration de la FCC et d'IC sur l'exposition aux radiations
Cet appareil est conforme à la norme RSS102 de la FCC/IC relative aux limites d'exposition aux radiations dans un environnement non contrôlé. Vous devez installer et utiliser cet appareil en respectant une distance minimale de 20 cm entre votre corps et l'élément rayonnant.

Vifa Denmark A/S
Mariendalsvej 2A
DK - 8800 Viborg
vifa.dk

The complete EU Declaration of Conformity can be downloaded from: www.vifa.dk/support

Firmware version:
Equal or later than System2.0.3 and BT/2.3

IMPORTANT SAFETY INSTRUCTIONS

Regulatory Safety Information

- 1 Read these instructions.
 - 2 Keep these instructions.
 - 3 Heed all warnings.
 - 4 Follow all instructions.
 - 5 Do not use this apparatus near water.
 - 6 Clean only with dry cloth.
 - 7 Do not block any ventilation openings. Install in accordance with the manufacturer's instructions.
 - 8 Do not install near any heat sources such as radiators, heat registers, stoves, or other apparatus (including amplifiers) that produce heat.
 - 9 Do not defeat the safety purpose of the polarized or grounding-type plug. A polarized plug has two blades with one wider than the other. A grounding type plug has two blades and a third grounding prong. The wide blade or the third prong are provided for your safety. If the provided plug does not fit into your outlet consult an electrician for replacement of the obsolete outlet.
 - 10 Protect the power cord from being walked on or pinched particularly at plugs convenience receptacles and the point where they exit from the apparatus.
 - 11 Only use attachments/accessories specified by the manufacturer.
 - 12 Use only with the cart, stand, tripod, bracket or table specified by the manufacturer or sold with the apparatus. When a cart is used, use caution when moving the cart/apparatus combination to avoid injury from tip-over.
 - 13 Unplug this apparatus during lightning storms or when unused for long periods of time.
 - 14 Refer all servicing to qualified service personnel. Servicing is required when the apparatus has been damaged in any way, such as power-supply cord or plug is damaged, liquid has been spilled or objects have fallen into the apparatus, the apparatus has been exposed to rain or moisture, does not operate normally or has been dropped.
 - 15 To completely disconnect unit power from the AC mains, disconnect the unit's power cord from the mains socket.
 - 16 Important! This equipment is not intended to be used on soft supportlike beddings. Blankets etc.)
 - 17 The socket-outlet shall be easily accessible.
 - 18 Disposal of a battery into fire or a hot oven, or mechanically crushing or cutting of a battery can result in an explosion
 - 19 High or low extreme temperatures that a battery can be subjected to during use is 10°C - 45°C, storage -20°C - 40°C or transportation 10°C - 45°C; and low air pressure is 86-106Kpa at 2000m. high altitude.
 - 20 Leaving a battery in an extremely high temperature surrounding environment that can result in an explosion or the leakage of flammable liquid or gas.
 - 21 Battery subjected to extremely low air pressure that may result in an explosion or the leakage of flammable liquid or gas.
 - 22 Product label affixed to the bottom of the product.
 - 23 **CAUTION:** Danger of explosion if battery is incorrectly replaced. Replace only with the same or equivalent type.
 - 24 **WARNING:** The Battery (battery pack or batteries installed) shall not be exposed to excessive heat such as sunshine, fire or the like.
 - 25 **WARNING:** The main plug shall remain readily operable.
 - 26 Keep minimum distances 1cm around the apparatus for sufficient ventilation.
 - 27 The ventilation should not be impeded by covering the ventilation openings with items, such as newspapers, table-cloths, curtains, etc.
 - 28 Attention should be drawn to the environmental aspects of battery disposal.
 - 29 The use of apparatus in tropical and/or moderate climates.
 - 30 Risk of explosion if the battery is replaced by an incorrect type.
- WARNING:**
- To reduce the risk of fire and electric shock do not expose this apparatus to rain or moisture.
 - Do not place objects filled with liquids such as vases on the apparatus.
 - Do not open apparatus. There are no user-serviceable parts inside. Risk of electric shock inside.
 - The apparatus shall not be exposed to dripping or splashing.
 - No naked flame sources, such as lighted candles, such as lighted candles, should be placed on the apparatus.



The maximum ambient temperature should not exceed 40°C.

Vifa Denmark A/S hereby declares that the product Oslo (VIFA060), which contains Bluetooth radio transceiver, is in compliance with EU directive 2014/53/EU (RED).

The radiated power for RF frequency range 2402-2480MHz is less than 10dBm.



The lightning flash and arrow head within the triangle is a warning sign alerting you of dangerous voltage inside the product



The exclamation point within the triangle is a warning sign alerting you of important instructions accompanying the product.

Du har gjort et godt valg

Vifa Oslo. En høyttaler for alle som setter pris på eksklusiv, nordisk design og autentisk lyd.

Denne bruksanvisningen skal være enkel, og gir deg bare detaljene - for eksempel hvordan du tilkobler trådløst på et øyeblikk.

Gled deg!

Produktvedlikehold 6

Oslo Funksjoner

Knapper og indikatorer på Oslo 8

Mode -knapp og Status-indikator 9

Batterilading 10

Tilkobling av Oslo

Tilkobling med *Bluetooth*[®] 12

Tilkobling med *Bluetooth*[®] - NFC 13

Kablet forbindelse 14

Feilsøking

Fabrikkinnstillinger 16

Tilbakestilling av Oslo 17

Kundestøtte 18

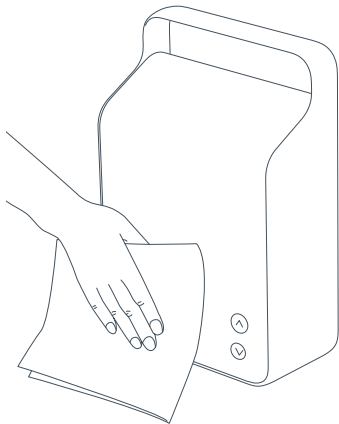
Varemerker 18

Spesifikasjoner 19



Bruksanvisninger på andre språk finner du på: www.vifa.dk/support

PRODUKTVEDLIKEHOLD



OSLO FUNKSJONER

Oslo er produsert for å gi deg musikkglede som varer lenge. For å oppnå musikkgjengivelse av beste kvalitet er det viktig at høyttaleren ikke utsettes for regn, fuktighet, meget fuktig klima eller varmekilder som kan skade den. Produktet er beregnet på bruk ved en temperatur på mellom 5 - 40 °C.

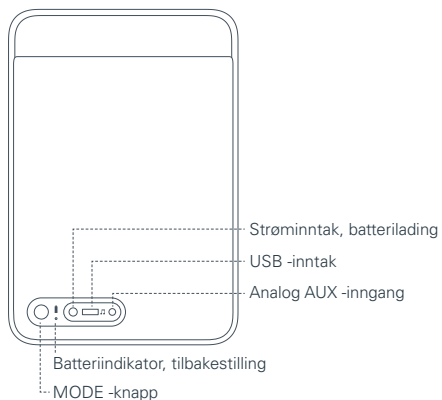
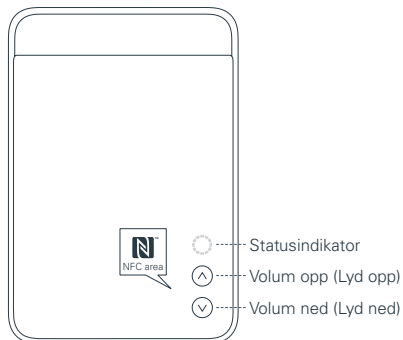
Rengjøring

Vifa-produktet ditt har en overflate i vakkert og meget holdbart stoff fra Kvadrat. Flekker som ikke er fett, kan fjernes ved forsiktig avtørring med løfri klut. Lo kan fjernes fra stoffet med en lorull.



Bruk aldri støvsuger, for dette kan skade høyttaleren under stoffet.

KNAPPER OG INDIKATORER PÅ OSLO



MODE-KNAPP OG STATUSINDIKATOR

Slå Oslo PÅ

Trykk og hold MODE -knappen nede til statusindikatoren lyser.

Slå Oslo AV

Trykk og hold MODE -knappen nede til statusindikatoren blinker GULT. Slipp knappen.

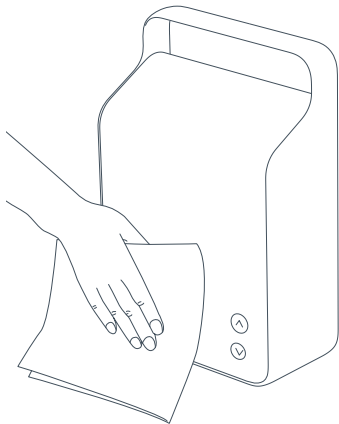
Oslo i SØVN-modus

Hvis det ikke kommer noe signal eller ingen knapp trykkes på 3 minutter, går Oslo i SØVN -modus, og det betyr at statusindikatoren vil pulserse.

Statusindikator

- BLÅ - Bluetooth -tilkobling
- GRØNN - AUX -tilkobling
- RØD - Varsling
- GUL - Ingen aktive forbindelser

BATTERILADING



TILKOBLING TIL OSLO

Full opplading tar 3-4 timer. Vennligst lad Oslo opp i mer enn 4 timer første gang du lader den.

Når du lader, kan du se oppladingsnivået.



Lavt

Batterinivå lavere enn 5%, RØD



Middels

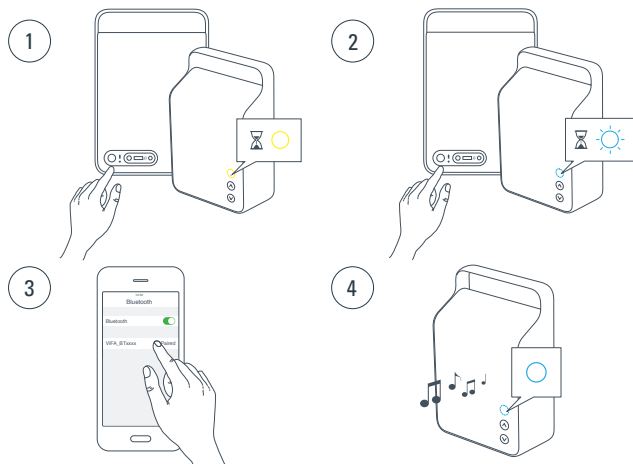
Batterinivået mellom 5% og 80%, GUL



Fullt

Batterinivået over 80%, GRØNN

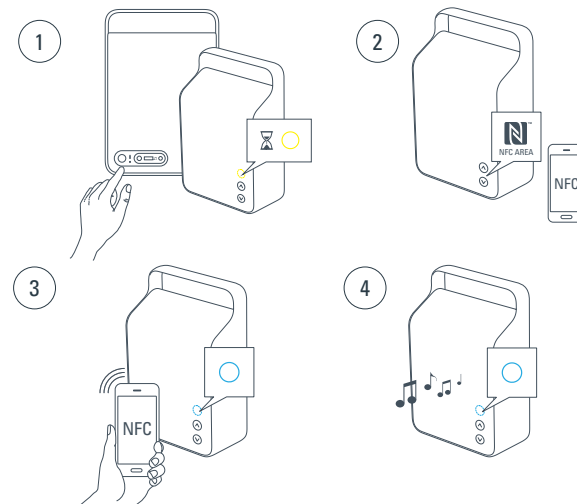
TILKOBLING MED *BLUETOOTH*[®]



1. For å slå Oslo på trykker du på MODE-knappen og holder den nede til statusindikatoren lyser.
2. Trykk og hold MODE-knappen nede til statusindikatoren blinker BLÅTT.
3. Aktiver *Bluetooth* -paring på enheten din og velg Vifa BTxxxxx som *Bluetooth* -enhet.
4. Når statusindikatoren lyser kontinuerlig BLÅTT, er forbindelsen etablert. La musikken spille.

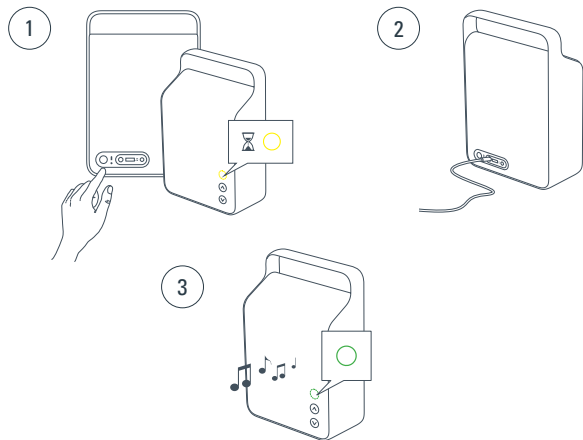
TILKOBLING MED *BLUETOOTH*[®] - NFC

Kun for NFC-aktiverte enheter



1. For å slå Oslo på trykker du på MODE-knappen og holder den nede til statusindikatoren lyser.
2. Oslos NFC-område er plassert ved volumknappene.
3. Aktiver NFC -funksjonen på enheten din. Sett en NFC -aktivert enhet på NFC -området og godkjenn paring på enheten din.
4. Når statusindikatoren lyser kontinuerlig BLÅTT, er forbindelsen etablert. La musikken spille.

KABLET FORBINDELSE



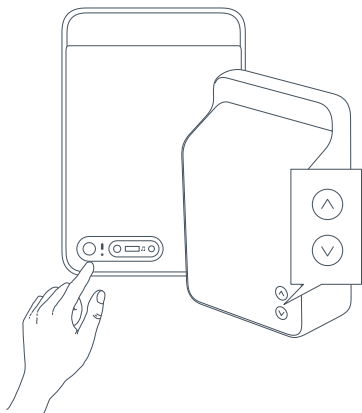
1. For å slå Oslo på trykker du på MODE-knappen og holder den nede til statusindikatoren lyser.
2. Tilkoble ledningen på baksiden og start avspillingen av musikk fra enheten din.
3. Statusindikatoren lyser kontinuerlig GRØNT når avspilling via kabel er aktivert.



Oslo foretrekker Bluetooth fremfor AUX. Med når MODE-knappen trykkes raskt, vil forbindelsen veksle fra Bluetooth til AUX. Når knappen trykkes igjen, går enheten tilbake til vanlig prioritet.

FEILSØKING

FABRIKKINNSTILLINGER



Fabrikkinnstillinger

Tilbakestilling av Helsinkis programvare til fabrikkinnstillingene

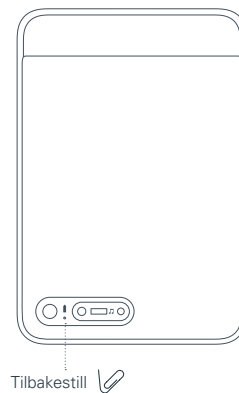
For å tilbakestille Oslo til fabrikkinnstillingene, trykkes MODE -knappen og volum opp- og volum -nedknappene og holdes nede samtidig til statusindikatoren lyser RØDT, GRØNT, BLÅTT og slås av.

Slipp knappene, og Oslo tilbakestilles til fabrikkinnstillingene. Vennligst merk at ALLE BRUKERINNSTILLINGER VIL GÅ TAPT etter denne tilbakestillingen.



Mer informasjon om fastvareoppdatering av Oslo finner du på www.vifa.dk/support.

TILBAKESTILLING AV OSLO



Tilbakestill

Kan brukes hvis Oslo fryser.

For å tilbakestille Oslo trykker du raskt på tilbakestillingsknappen (reset), så slås Oslo av. -Ingen brukerinnsstillinger går tapt.



Hvis du opplever problemer som ikke beskrives i denne bruksanvisningen, vennligst gå til www.vifa.dk/support

REGISTER AND TRADEMARKS

Vifa App

An app will be available for your Vifa Oslo.
More info will be announced on www.vifa.dk/support

Register your Oslo

We encourage you to register your product at www.vifa.dk/support



The Bluetooth® word mark and logos are registered trademarks owned by Bluetooth SIG, Inc., and any use of such marks by Vifa Denmark A/S is under license. Other trademarks and trade names are those of their respective owners.



Qualcomm® aptX™

Qualcomm is a trademark of Qualcomm Incorporated, registered in the United States and other countries. aptX is a trademark of Qualcomm Technologies International, Ltd., registered in the United States and other countries.



The N-Mark is a trademark or registered trademark of NFC Forum, Inc. in the United States and in other countries.

SPESIFIKASJONER

| | |
|---|--|
| Beskrivelse | Bærbar trådløs høyttaler |
| Tekniske funksjoner | <i>Bluetooth®</i> Wireless Technology Qualcomm® aptX™ audio 3,5 mm AUX -mini-jack NFC Litiumionbatteri Kraftbalanserte woofere DSP-overkryssing, optimalisert for lav forvrengning og høy presisjon 4 kanals digital PurePath -forsterker |
| Driverenheter | |
| Full-range | 2 x 50 mm Vifa -driverenheter med aluminiumskonus, neodymmagnet og full rekkevidde. |
| Woofer | 2 x 65 mm Vifa-driverenheter med flat sandwichkonus og neodym -magnet. Montert mekanisk, bak mot bak, i en kraftbalansert konfigurasjon, støttet av 2 passive radiatorer. |
| Frekvensrespons | 55 Hz - 18 kHz @ +/- 3 dB |
| Inngangsspenning, veggadapter | 100 volt - 240 volt 50/60 Hz 1500mA (maks.) |
| Inngangsspenning, høyttaler Strømførbuk i hvilemodus | 18VDC, 2500mA Mindre enn 0,5 watt når batteriet er helt oppladet |
| Innganger | <i>Bluetooth®</i> Wireless Technology Qualcomm® aptX™ audio 3,5 mm AUX -mini-jack |
| Mål: Høyde/Bredde/Dybde Nettovekt Ramme Kabinett Gitter | 268 mm / 181 mm / 90 mm 2,4 kg Trykkstøpt aluminium i ett stykke Polykarbonat Spesialprodusert Kvadrat -stoff |

Besøk nettsiden vår for mer informasjon:

vifa.dk