

vifa

COPENHAGEN 2.0

Guida rapida - Modello: VIFA012

ITALIANO

IMPORTANT STATEMENTS:

This device complies with Part 15 of the FCC Rules. Its operation is subject to the following two conditions:

1. This device may not cause harmful interference, and
2. This device must accept any interference received, including interference that may cause undesired operation.

Cet appareil est conforme à la section 15 des réglementations de la FCC. Le fonctionnement de l'appareil est sujet aux deux conditions suivantes:

1. Cet appareil ne doit pas provoquer d'interférences néfastes, et
2. Cet appareil doit tolérer les interférences reçues, y compris celles qui risquent de provoquer un fonctionnement indésirable.

Note:

This product has been tested and found to comply with the limits for a Class B digital device, pursuant to Part 15 of the FCC Rules. These limits are designed to provide reasonable protection against harmful interference in a residential installation. This product generates, uses, and can radiate radio frequency energy and, if not installed and used in accordance with the instructions, may cause harmful interference to radio communications.

However, there is no guarantee that interference will not occur in a particular installation. If this product does cause harmful interference to radio or television reception, which can be determined by turning the equipment off and on, the user is encouraged to try to correct the interference by one or more of the following measures:

- Reorient or relocate the receiving antenna.
- Increase the separation between the equipment and receiver.
- Connect the equipment into an outlet on a circuit different from that to which the receiver is connected.
- Consult the dealer or an experienced radio/TV technician for help.

Changes or modifications not expressly approved by the party responsible for compliance could void the user's authority to operate the equipment.

This device complies with Industry Canada licence-exempt RSS standard(s). Operation is subject to the following two conditions:

1. This device may not cause interference, and
2. This device must accept any interference, including interference that may cause undesired operation of the device.

Le présent appareil est conforme aux CNR d'Industrie Canada applicables aux appareils radio-exemptés de licence. L'exploitation est autorisée aux deux conditions suivantes:

1. l'appareil ne doit pas produire de brouillage, et
2. l'utilisateur de l'appareil doit accepter tout brouillage radioélectrique subi, même si le brouillage est susceptible d'en compromettre le fonctionnement.

FCC/IC Radiation Exposure Statement

This equipment complies with FCC/IC RSS-102 radiation exposure limits set forth for an uncontrolled environment. This equipment should be installed and operated with minimum distance 20 cm between the radiator & your body.

Déclaration de la FCC et d'IC sur l'exposition aux radiations
Cet appareil est conforme à la norme RSS102 de la FCC/IC relative aux limites d'exposition aux radiations dans un environnement non contrôlé. Vous devez installer et utiliser cet appareil en respectant une distance minimale de 20 cm entre votre corps et l'élément rayonnant.

Vifa Denmark A/S
Mariendalsvej 2A
DK - 8800 Viborg
vifa.dk



The maximum ambient temperature should not exceed 40°C.

Vifa Denmark A/S hereby declares that the product Copenhagen 2.0 (VIFA012), which contains Bluetooth and Wi-Fi radio transceivers, complies with the essential requirements of EU directive 2014/53/EU (RED).

The radiated power for Bluetooth RF frequency range 2402-2480MHz is less than 10dBm.

The radiated power for Wi-Fi RF frequency range 2422-2472MHz is less than 20dBm.

The complete EU Declaration of Conformity can be downloaded from: www.vifa.dk/support

Firmware version:
Equal or later than System/3.6.4917.206 and BT/1.2

IMPORTANT SAFETY INSTRUCTIONS

Regulatory Safety Information

- 1 Read these instructions.
 - 2 Keep these instructions.
 - 3 Heed all warnings.
 - 4 Follow all instructions.
 - 5 Do not use this apparatus near water.
 - 6 Clean only with dry cloth.
 - 7 Do not block any ventilation openings. Install in accordance with the manufacturer's instructions.
 - 8 Do not install near any heat sources such as radiators, heat registers, stoves, or other apparatus (including amplifiers) that produce heat.
 - 9 Do not defeat the safety purpose of the polarized or grounding-type plug. A polarized plug has two blades with one wider than the other. A grounding type plug has two blades and a third grounding prong. The wide blade or the third prong are provided for your safety. If the provided plug does not fit into your outlet consult an electrician for replacement of the obsolete outlet.
 - 10 Protect the power cord from being walked-on or pinched particularly at plugs, convenience receptacles and the point where they exit from the apparatus.
 - 11 Only use attachments/accessories specified by the manufacturer.
 - 12 Use only with the cart, stand, tripod, bracket or table specified by the manufacturer or sold with the apparatus. When a cart is used, use caution when moving the cart/apparatus combination to avoid injury from tip-over.
 - 13 Unplug this apparatus during lightning storms or when unused for long periods of time.
 - 14 Refer all servicing to qualified service personnel. Servicing is required when the apparatus has been damaged in any way, such as power-supply cord or plug is damaged, liquid has been spilled or objects have fallen into the apparatus, the apparatus has been exposed to rain or moisture, does not operate normally or has been dropped.
 - 15 To completely disconnect unit power from the AC mains, disconnect the unit's power cord from the mains socket.
 - 16 Important! This equipment is not intended to be used on soft support/like beddings. Blankets etc.)
 - 17 The socket-outlet shall be easily accessible.
 - 18 Disposal of a battery into fire or a hot oven, or mechanically crushing or cutting of a battery can result in an explosion
 - 19 High or low extreme temperatures that a battery can be subjected to during use is 10°C - 45°C, storage -20°C - 40°C or transportation 10°C - 45°C, and low air pressure is 86-106kPa at 2000m. high altitude.
 - 20 Leaving a battery in an extremely high temperature surrounding environment that can result in an explosion or the leakage of flammable liquid or gas.
 - 21 Battery subjected to extremely low air pressure that may result in an explosion or the leakage of flammable liquid or gas.
 - 22 Product label affixed to the bottom of the product.
 - 23 **CAUTION:** Danger of explosion if battery is incorrectly replaced. Replace only with the same or equivalent type.
 - 24 **WARNING:** The Battery (battery pack or batteries installed) shall not be exposed to excessive heat such as sunshine, fire or the like.
 - 25 **WARNING:** The main plug shall remain readily operable.
 - 26 Keep minimum distances 1cm around the apparatus for sufficient ventilation.
 - 27 The ventilation should not be impeded by covering the ventilation openings with items, such as newspapers, table-cloths, curtains, etc.
 - 28 Attention should be drawn to the environmental aspects of battery disposal.
 - 29 The use of apparatus in tropical and/or moderate climates.
 - 30 Risk of explosion if the battery is replaced by an incorrect type.
- WARNING:**
- To reduce the risk of fire and electric shock do not expose this apparatus to rain or moisture.
 - Do not place objects filled with liquids such as vases on the apparatus.
 - Do not open apparatus. There are no user-serviceable parts inside. Risk of electric shock inside.
 - The apparatus shall not be exposed to dripping or splashing.
 - No naked flame sources, such as lighted candles, such as lighted candles, should be placed on the apparatus.



The lightning flash and arrow head within the triangle is a warning sign alerting you of dangerous voltage inside the product



The exclamation point within the triangle is a warning sign alerting you of important instructions accompanying the product.

Un'ottima scelta

Multi-camera. Multi-utente. Multi-sorgente.
Copenhagen 2.0 è parte del sistema Vifa®HOME
che copre ogni angolo della vostra casa e porta la
migliore esperienza audio.

Buon divertimento!

COPENHAGEN

Contenuto della confezione	6
Per iniziare	7

CONNESSIONE DI COPENHAGEN

Connessione alla rete Wi-Fi	8
Connessione con <i>Bluetooth</i> ®	9
Connessione cablata	10

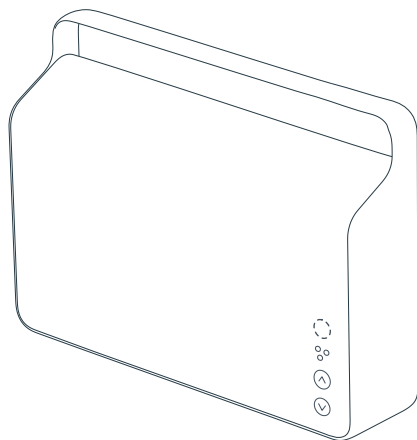
Vifa®HOME

Vifa®PLAY	11
Pausa / Muto	12
Vifa®LINK	13
Impostazioni di fabbrica	14
Reset Copenhagen	15
Telecomando	16
Dati tecnici	17
Marchi registrati	18



Per la Guida rapida in altre lingue, visitare: www.vifa.dk/support

DOTAZIONE

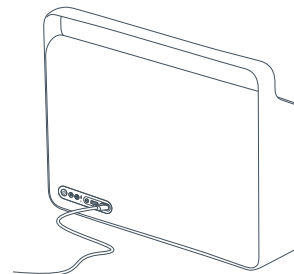


Vifa Copenhagen, cavo di alimentazione, cavo AUX 3,5 mm mini jack, custodia per il trasporto, guida rapida e garanzia.

PER INIZIARE

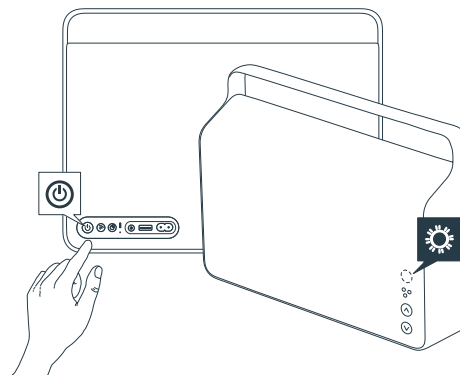
1

Inserire il cavo di alimentazione nell'altoparlante e quindi collegarlo a una presa di corrente.



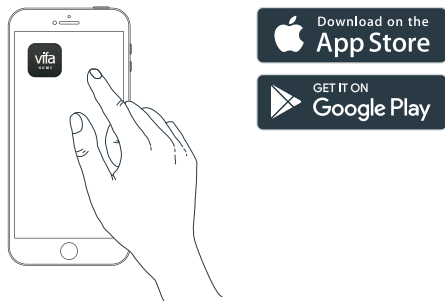
2

Tenere premuto il pulsante ACCENSIONE fino a quando la SPIA DI STATO ANTERIORE si illumina e l'altoparlante è acceso. Attendere fino a 1 minuto fino a quando il prodotto è pronto. Questo è indicato dal cambiamento da un lampeggio BIANCO rapido a un lampeggio BIANCO lento.

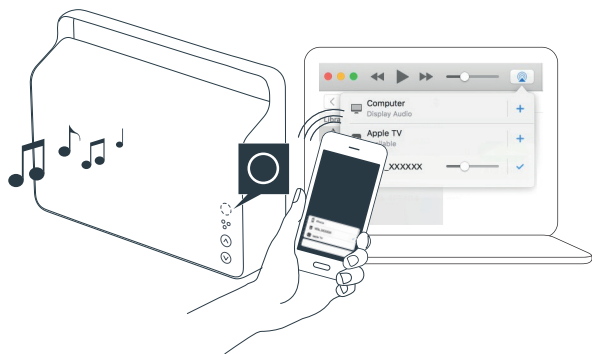


CONNESSIONE ALLA RETE WI-FI

Scaricare l'app gratuita Vifa®HOME e seguire le istruzioni dell'app.
Per maggiori informazioni sulla possibilità di utilizzare un computer o altri dispositivi per l'impostazione, visitare vifa.dk/support

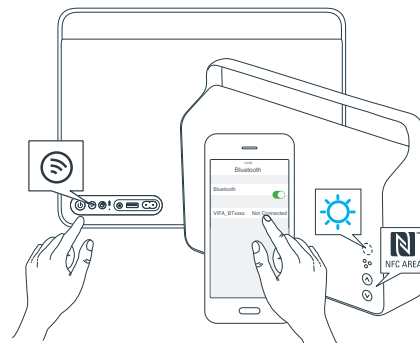


Durante l'impostazione si effettua la connessione dell'altoparlante alla rete Wi-Fi. Assicurarsi di avere a portata di mano la password della rete Wi-Fi. Quando Copenhagen è collegato, la SPIA DI STATO diviene BIANCA fissa ed è possibile iniziare lo streaming verso l'altoparlante.

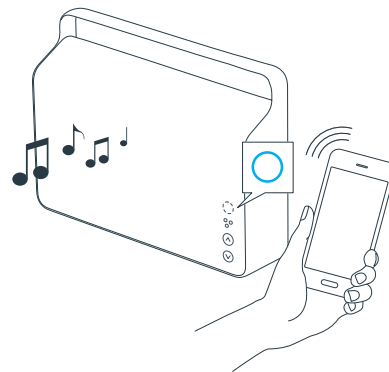


CONNESSIONE CON BLUETOOTH®

Premere brevemente il pulsante CONNESSIONE e la SPIA DI STATO lampeggia in BLU.

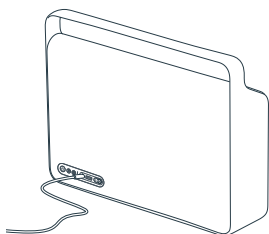


La SPIA DI STATO diventa BLU fissa quando viene avviata la riproduzione.

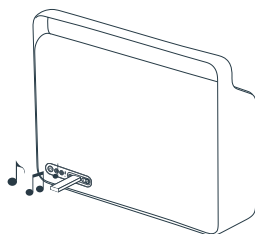


CONNESSIONE CABLATTA

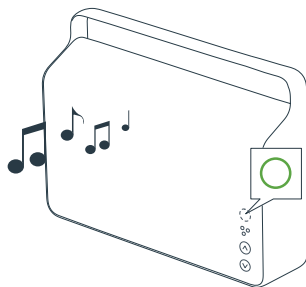
La SPIA DI STATO diviene VERDE fissa quando la riproduzione avviene da una connessione cablata.



Cavo AUX 3,5 mm mini jack
o cavo ottico



Disco USB



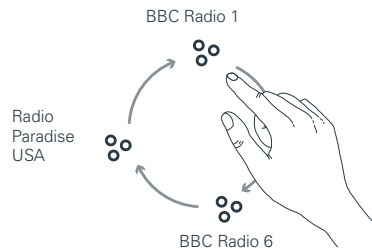
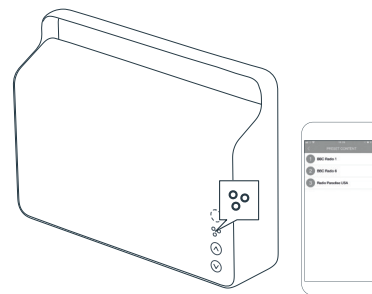
Vifa®PLAY

Il pulsante Vifa®PLAY offre l'accesso immediato a tutte le stazioni radio e la musica preferite.

Collegare l'altoparlante Copenhagen alla rete Wi-Fi e tenere premuto il pulsante Vifa®PLAY per iniziare lo streaming delle stazioni radio preimpostate.

Tenere premuto il pulsante Vifa®PLAY per passare alla stazione radio preimpostata successiva.

È possibile modificare le preimpostazioni di Vifa®PLAY utilizzando l'app Vifa®HOME.

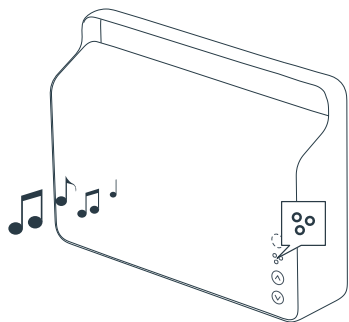


NOTA: Le stazioni radio preimpostate funzionano solo se Tuneln è disponibile nel vostro paese.

PAUSA / MUTO

Premere brevemente il pulsante Vifa®PLAY per selezionare Pausa/Muto.

Premere nuovamente brevemente per selezionare Riproduzione/Riattivazione.



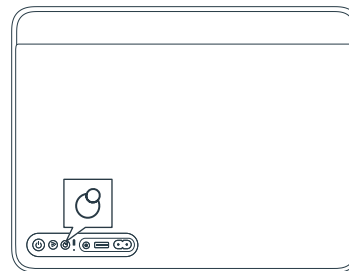
Vifa®LINK

Vifa®LINK: consente di collegare fra loro diversi altoparlanti Vifa®HOME, con un discreto clic.

Premere brevemente il pulsante Vifa®LINK per collegare l'altoparlante Copenhagen a un altro altoparlante Vifa®HOME.

Tenere premuto il pulsante Vifa®LINK per annullare il collegamento.

Per il collegamento di più di due altoparlanti Vifa®HOME, utilizzare l'app Vifa®HOME.

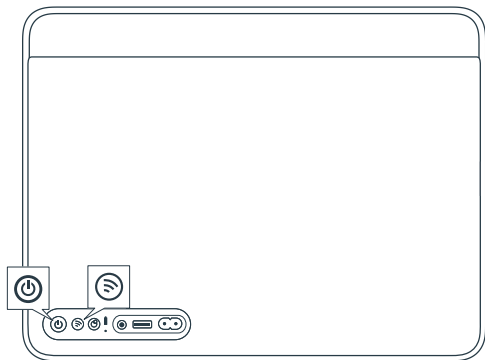


FACTORY DEFAULT

Ripristina il software di Copenhagen alle impostazioni di fabbrica.

Per ripristinare Copenhagen alle impostazioni di fabbrica, tenere premuti contemporaneamente i pulsanti ACCENSIONE e CONNESSIONE fino a quando L'INDICATORE DI STATO si accende: ROSSO-VERDE-BLU. Rilasciare i pulsanti e Copenhagen sarà ripristinato alle impostazioni di fabbrica:

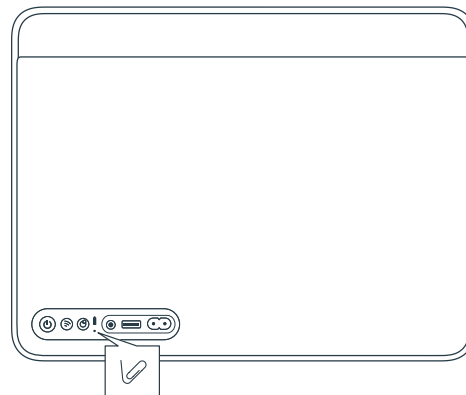
TUTTE LE IMPOSTAZIONI DELL'UTENTE ANDRANNO PERDUTE.



RESET COPENHAGEN

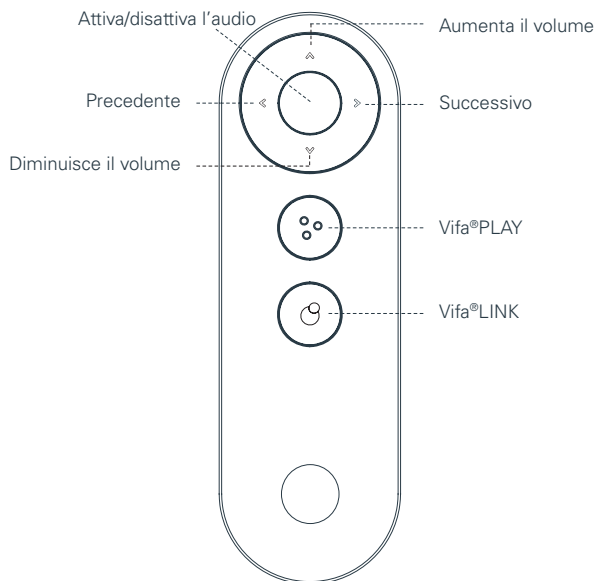
Può essere utilizzato in caso di blocco di Copenhagen.

Per effettuare il reset di Copenhagen, premere brevemente il pulsante di reset; non andrà perduta alcuna impostazione.



TELECOMANDO VIFA R2 - ACCESSORIO

Il telecomando Vifa R2 consente di controllare facilmente l'altoparlante Copenhagen da qualsiasi punto della stanza.



Il telecomando Vifa R2 non è incluso nella confezione di Copenhagen.
Per maggiori informazioni su dove acquistare il telecomando Vifa R2, visitare: vifa.dk/shop

DATI TECNICI

Descrizione	Vifa®HOME – Altoparlante wireless Copenhagen
Dati tecnici	Bluetooth® Wireless Technology Qualcomm® aptX™ HD audio Wi-Fi B/G/N, 2,4 GHz Apple AirPlay Funziona con DLNA Elaborazione del segnale DSP Batteria agli ioni di litio Woofer con equilibrio di forza Amplificatore di potenza ad alte prestazioni a 6 canali
Unità driver	
Tweeter	2 X 28 mm unità driver Vifa con calotta morbida e magnete in neodimio.
Gamma media	2 X 50 mm unità driver Vifa con cono in alluminio e magnete in neodimio.
Woofer	2 X 80 mm unità driver Vifa con cono a sandwich piatto e magnete in neodimio. Montati meccanicamente in configurazione a equilibrio di forza, supportati da 4 radiatori passivi.
Risposta di frequenza	50Hz - 20 kHz a +/- 3 dB
Tensione di ingresso	100-240 V ~ 50/60 Hz
Max. assorbimento di corrente nominale	160 watt
Assorbimento di corrente in standby	Meno di 0,5 watt
Uscita	USB 5 volt / 2,1 A
Ingressi	Bluetooth® Wireless Technology Qualcomm® aptX™ HD audio Wi-Fi Direct Rete Wi-Fi Cablaggio ottico o analogico (mini jack 3,5 mm) Disco USB
Dimensioni	268 mm / 362 mm / 90 mm
Altezza/Larghezza/Profondità	
Peso netto	4,65 kg
Telaio	Alluminio stampato monoscocca
Tessuto	Tessuto Kvadrat personalizzato

REGISTER AND TRADEMARKS

We encourage you to register your product at: www.vifa.dk/register



"Made for iPod", "Made for iPhone", and "Made for iPad" mean that an electronic accessory has been designed to connect specifically to iPod, iPhone, or iPad, respectively, and has been certified by the developer to meet Apple performance standards. Apple is not responsible for the operation of this device or its compliance with safety and regulatory standards. Please note that the use of this accessory with iPod, iPhone, or iPad may affect wireless performance.

AirPlay, iPad, iPhone, iPod, iPod classic, iPod nano, iPod touch, and Retina are trademarks of Apple Inc., registered in the U.S. and other countries. iPad Air, iPad min, and Lighting are trademarks of Apple Inc. In Japan, The trademark "iPhone" is used with a license from Aiphone K.K.

AirPlay works with iPhone, iPad, and iPod touch with iOS 4.3.3 or later, Mac with OS X Mountain Lion or later, and PC with iTunes 10.2.2 or later. Supports iOS 7 or later for setup using Wireless Accessory Configuration.



The Spotify software is subject to third party licenses found here: www.spotify.com/connect/third-party-licenses.

LISTEN OUT LOUD WITH SPOTIFY CONNECT

1. Connect your Copenhagen 2.0 to your wifi network
2. Open up the Spotify app on your phone, tablet or laptop using the same wifi network
3. Play a song and select Devices Available.
4. Select your Copenhagen 2.0 and start listening



The Wi-Fi CERTIFIED™ logo is a certification mark of Wi-Fi Alliance®.



The Bluetooth® word mark and logos are registered trademarks owned by Bluetooth SIG, Inc., and any use of such marks by Vifa Denmark A/S is under license. Other trademarks and trade names are those of their respective owners.



Qualcomm aptX HD

Qualcomm is a trademark of Qualcomm Incorporated, registered in the United States and other countries. aptX is a trademark of Qualcomm Technologies International, Ltd., registered in the United States and other countries.



The N-Mark is a trademark or registered trademark of NFC Forum, Inc. in the United States and in other countries.



Google Play and the Google Play logo are trademarks of Google Inc.



Vifa®HOME, Vifa®PLAY, Vifa®LINK and the logos are trademarks of Vifa Denmark A/S.

Per ulteriori informazioni vi preghiamo di visitare il nostro sito web su
vifa.dk