

vifa

# COPENHAGEN 2.0

*Hurtigguide for modell: VIFA012*

*NORSK*

# IMPORTANT STATEMENTS:

This device complies with Part 15 of the FCC Rules. Its operation is subject to the following two conditions:

1. This device may not cause harmful interference, and
2. This device must accept any interference received, including interference that may cause undesired operation.

Cet appareil est conforme à la section 15 des réglementations de la FCC. Le fonctionnement de l'appareil est sujet aux deux conditions suivantes:

1. Cet appareil ne doit pas provoquer d'interférences néfastes, et
2. Cet appareil doit tolérer les interférences reçues, y compris celles qui risquent de provoquer un fonctionnement indésirable.

## Note:

This product has been tested and found to comply with the limits for a Class B digital device, pursuant to Part 15 of the FCC Rules. These limits are designed to provide reasonable protection against harmful interference in a residential installation. This product generates, uses, and can radiate radio frequency energy and, if not installed and used in accordance with the instructions, may cause harmful interference to radio communications.

However, there is no guarantee that interference will not occur in a particular installation. If this product does cause harmful interference to radio or television reception, which can be determined by turning the equipment off and on, the user is encouraged to try to correct the interference by one or more of the following measures:

- Reorient or relocate the receiving antenna.
- Increase the separation between the equipment and receiver.
- Connect the equipment into an outlet on a circuit different from that to which the receiver is connected.
- Consult the dealer or an experienced radio/TV technician for help.

Changes or modifications not expressly approved by the party responsible for compliance could void the user's authority to operate the equipment.

This device complies with Industry Canada licence-exempt RSS standard(s). Operation is subject to the following two conditions:

1. This device may not cause interference, and
2. This device must accept any interference, including interference that may cause undesired operation of the device.

Le présent appareil est conforme aux CNR d'Industrie Canada applicables aux appareils radio-exemptés de licence. L'exploitation est autorisée aux deux conditions suivantes:

1. l'appareil ne doit pas produire de brouillage, et
2. l'utilisateur de l'appareil doit accepter tout brouillage radioélectrique subi, même si le brouillage est susceptible d'en compromettre le fonctionnement.

## FCC/IC Radiation Exposure Statement

This equipment complies with FCC/IC RSS-102 radiation exposure limits set forth for an uncontrolled environment. This equipment should be installed and operated with minimum distance 20 cm between the radiator & your body.

Déclaration de la FCC et d'IC sur l'exposition aux radiations  
Cet appareil est conforme à la norme RSS102 de la FCC/IC relative aux limites d'exposition aux radiations dans un environnement non contrôlé. Vous devez installer et utiliser cet appareil en respectant une distance minimale de 20 cm entre votre corps et l'élément rayonnant.

Vifa Denmark A/S  
Mariendalsvej 2A  
DK - 8800 Viborg  
vifa.dk



The maximum ambient temperature should not exceed 40°C.

Vifa Denmark A/S hereby declares that the product Copenhagen 420 (VIFA012), which contains Bluetooth and Wi-Fi radio transceivers, complies with the essential requirements of EU directive 2014/53/EU (RED).

The radiated power for Bluetooth RF frequency range 2402-2480MHz is less than 10dBm.

The radiated power for Wi-Fi RF frequency range 2422-2472MHz is less than 20dBm.

The complete EU Declaration of Conformity can be downloaded from: [www.vifa.dk/support](http://www.vifa.dk/support)

Firmware version:  
Equal or later than System/3.6.4917.206 and BT/1.2

# IMPORTANT SAFETY INSTRUCTIONS

## Regulatory Safety Information

- 1 Read these instructions.
  - 2 Keep these instructions.
  - 3 Heed all warnings.
  - 4 Follow all instructions.
  - 5 Do not use this apparatus near water.
  - 6 Clean only with dry cloth.
  - 7 Do not block any ventilation openings. Install in accordance with the manufacturer's instructions.
  - 8 Do not install near any heat sources such as radiators, heat registers, stoves, or other apparatus (including amplifiers) that produce heat.
  - 9 Do not defeat the safety purpose of the polarized or grounding-type plug. A polarized plug has two blades with one wider than the other. A grounding type plug has two blades and a third grounding prong. The wide blade or the third prong are provided for your safety. If the provided plug does not fit into your outlet consult an electrician for replacement of the obsolete outlet.
  - 10 Protect the power cord from being walked-on or pinched particularly at plugs, convenience receptacles and the point where they exit from the apparatus.
  - 11 Only use attachments/accessories specified by the manufacturer.
  - 12 Use only with the cart, stand, tripod, bracket or table specified by the manufacturer or sold with the apparatus. When a cart is used, use caution when moving the cart/apparatus combination to avoid injury from tip-over.
  - 13 Unplug this apparatus during lightning storms or when unused for long periods of time.
  - 14 Refer all servicing to qualified service personnel. Servicing is required when the apparatus has been damaged in any way, such as power-supply cord or plug is damaged, liquid has been spilled or objects have fallen into the apparatus, the apparatus has been exposed to rain or moisture, does not operate normally or has been dropped.
  - 15 To completely disconnect unit power from the AC mains, disconnect the unit's power cord from the mains socket.
  - 16 Important! This equipment is not intended to be used on soft support (like beddings, Blankets etc.)
  - 17 The socket-outlet shall be easily accessible.
  - 18 Disposal of a battery into fire or a hot oven, or mechanically crushing or cutting of a battery can result in an explosion
  - 19 High or low extreme temperatures that a battery can be subjected to during use is 10°C - 45°C, storage -20°C - 40°C or transportation 10°C - 45°C, and low air pressure is 86-106kPa at 2000m. high altitude.
  - 20 Leaving a battery in an extremely high temperature surrounding environment that can result in an explosion or the leakage of flammable liquid or gas.
  - 21 Battery subjected to extremely low air pressure that may result in an explosion or the leakage of flammable liquid or gas.
  - 22 Product label affixed to the bottom of the product.
  - 23 **CAUTION:** Danger of explosion if battery is incorrectly replaced. Replace only with the same or equivalent type.
  - 24 **WARNING:** The Battery (battery pack or batteries installed) shall not be exposed to excessive heat such as sunshine, fire or the like.
  - 25 **WARNING:** The main plug shall remain readily operable.
  - 26 Keep minimum distances 1cm around the apparatus for sufficient ventilation.
  - 27 The ventilation should not be impeded by covering the ventilation openings with items, such as newspapers, table-cloths, curtains, etc.
  - 28 Attention should be drawn to the environmental aspects of battery disposal.
  - 29 The use of apparatus in tropical and/or moderate climates.
  - 30 Risk of explosion if the battery is replaced by an incorrect type.
- WARNING:**
- To reduce the risk of fire and electric shock do not expose this apparatus to rain or moisture.
  - Do not place objects filled with liquids such as vases on the apparatus.
  - Do not open apparatus. There are no user-serviceable parts inside. Risk of electric shock inside.
  - The apparatus shall not be exposed to dripping or splashing.
  - No naked flame sources, such as lighted candles, such as lighted candles, should be placed on the apparatus.



The lightning flash and arrow head within the triangle is a warning sign alerting you of dangerous voltage inside the product



The exclamation point within the triangle is a warning sign alerting you of important instructions accompanying the product.

## *Du har gjort et godt valg*

Multi-rom. Multi-bruker. Multi-kilde.  
Copenhagen 2.0 er en del av Vifa®HOME-systemet som gir deg den ultimate lydopplevelsen i alle husets rom.

Gled deg!

### **COPENHAGEN**

I esken .....	6
Kom i gang.....	7

### **KOBLE TIL COPENHAGEN**

Tilkobling via Wi-Fi-nettverk .....	8
Tilkobling via <i>Bluetooth</i> ® .....	9
Tilkobling via kabel .....	10

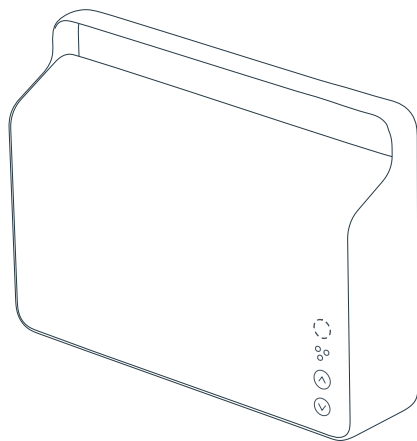
### **VIFA®HOME**

Vifa®PLAY.....	11
Pause/demp.....	12
Vifa®LINK.....	13
Fabrikkinstillinger .....	14
Tilbakestill .....	15
Fjernkontroll .....	16
Spesifikasjoner .....	17
Varemerker .....	18



Gå til [www.vifa.dk/support](http://www.vifa.dk/support) for hurtigguider på andre språk

## INKLUDERT I ESKEN

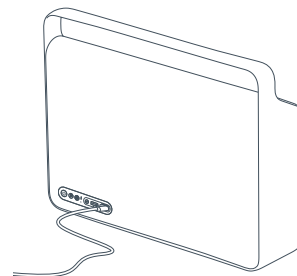


Vifa Copenhagen, strømledning, AUX 3,5 mm minijack-kabel, reiseveske, hurtigguide og garanti.

## KOM I GANG

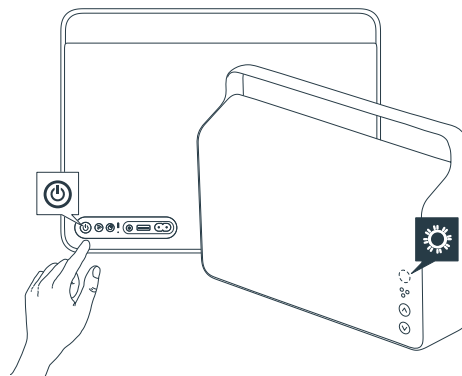
1

Koble til strømledning i høyttaleren og plugg i stikkontakten.



2

Trykk og hold inne på-knappen til statusindikatoren foran lyser og høyttaleren er skrudd PÅ. Vent i opptil 1 minutt til den er klar. Dette indikeres ved at lyset begynner å blinke mer langsomt.

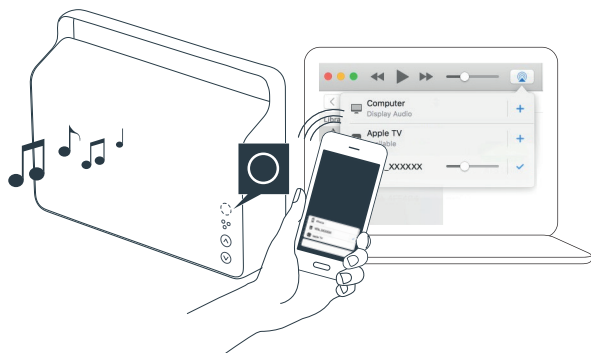


## TILKOBLING TIL ET WI-FI-NETTVERK

Last ned gratisappen Vifa®HOME og følg instruksjonene i appen. Besøk [vifa.dk/support](http://vifa.dk/support) for å lære mer om f.eks. bruk av datamaskiner eller andre enheter for installering.

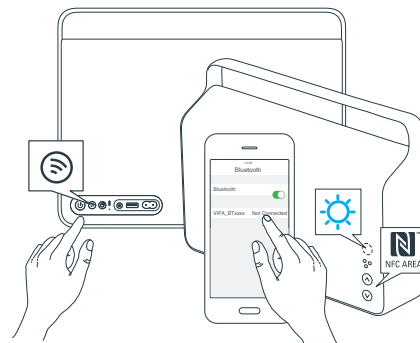


Under installeringen kobler du høyttaleren til ditt trådløse nettverk. Sørg for å ha nettverkspassordet tilgjengelig. Når Copenhagen er tilkoblet, viser statusindikatoren et HVITT lys og du kan begynne strømmingen til høyttaleren din.

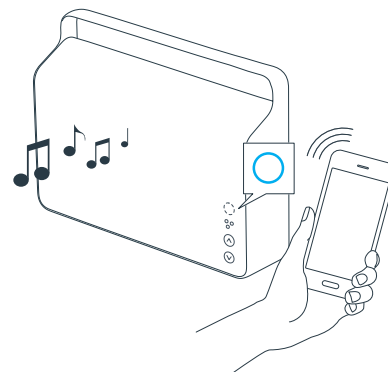


## TILKOBLING VIA *BLUETOOTH*®

Trykk på KOBLE TIL-knappen og statusindikatoren vil begynne å blinke BLÅTT.

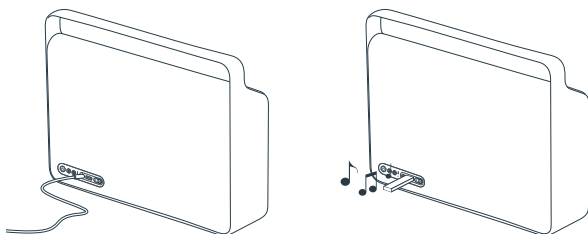


STATUSINDIKATOREN lyser BLÅTT når avspillingen starter.



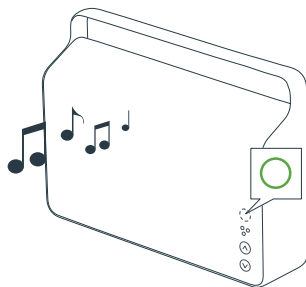
## TILKOBLING VIA KABEL

STATUSINDIKATOREN viser et GRØNT lys når avspillingen gjøres via en kabelforbindelse.



AUX 3,5 mm minijack-kabel  
eller optisk kabel

Minnepinne



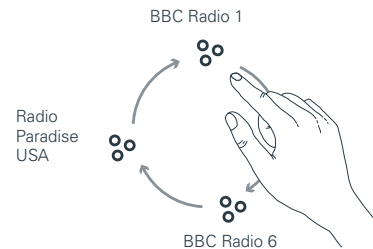
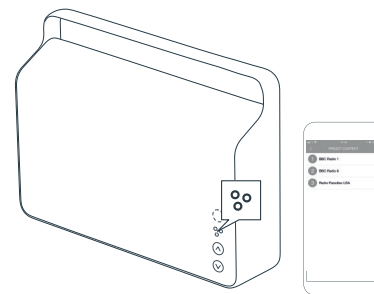
## Vifa®PLAY

Vifa®PLAY-knappen gir deg umiddelbar tilgang til favoritt-radiostasjonene dine.

Koble Copenhagen-høytaleren din til nettverket og trykk og hold inne Vifa®PLAY-knappen for å strøme de forhåndsvalgte radiostasjonene.

Trykk og hold inne Vifa®PLAY-knappen for å gå til neste forhåndsvalgte radiostasjon.

Du kan endre forhåndsvalgene i Vifa®PLAY med Vifa®HOME-appen.

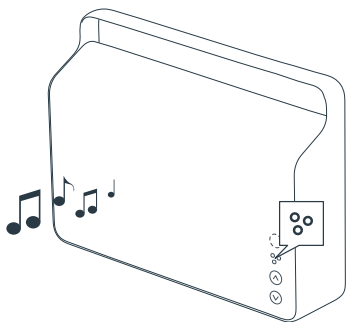


*Merknad: De forhåndsvalgte radiostasjonene fungerer kun dersom Tuneln er tilgjengelig i landet ditt.*

## PAUSE/DEMP

Trykk på Vifa®PLAY-knappen for å pause/dempe.

Trykk igjen for å spille av.



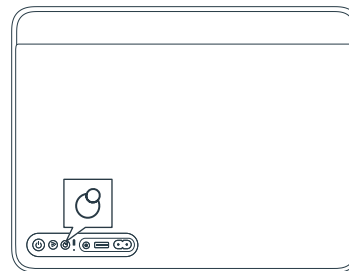
## Vifa®LINK

Vifa®LINK – koble sammen ulike Vifa®HOME-høytalere med kun ett enkelt klikk.

Trykk på Vifa®LINK-knappen for å koble Copenhagen-høytaleren din til en annen Vifa®HOME-høytaler.

Trykk og hold inne Vifa®LINK-knappen for å avbryte koblingen.

Bruk Vifa®HOME-appen for å koble sammen mer enn to Vifa®HOME-høytalere.

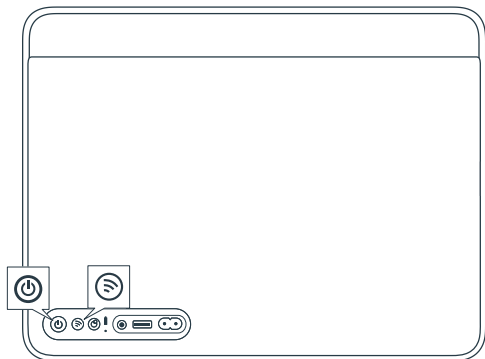


## FABRIKKINNSTILLINGER

Tilbakestill Copenhagen's programvare til fabrikkinnstillingene.

For å tilbakestille Copenhagen til fabrikkinnstillingene trykkes POWER- og CONNECT- knappene samtidig til STATUSINDIKATOREN begynner å lys opp: RØD-GRØNN-BLÅ. Slipp knappene, og Copenhagen vil gå tilbake til fabrikkinnstillingene - etter denne tilbakestillingen vil:

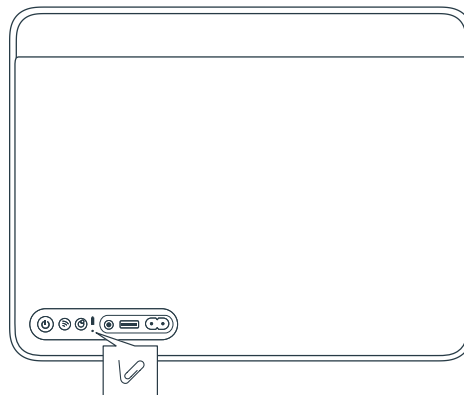
ALLE BRUKERINNSTILLINGER GÅ TAPT.



## TILBAKESTILL

Kan brukes hvis Copenhagen fryser.

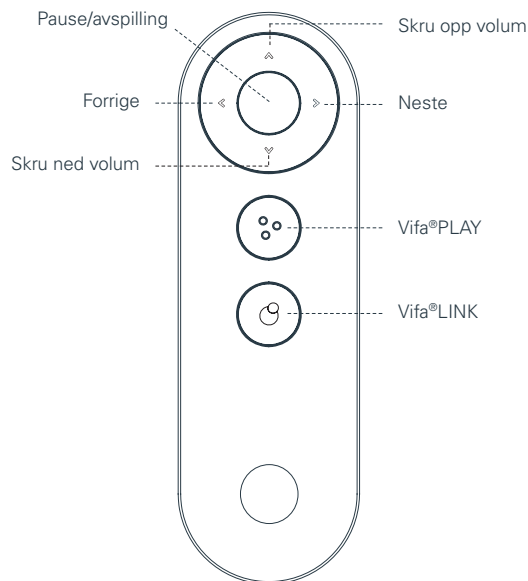
For å tilbakestille Copenhagen, trykker du raskt på "Reset" (tilbakestilling)- knappen - ingen brukerinnstillinger vil gå tapt.





## VIFA R2-FJERNKONTROLL

Med Vifa R2-fjernkontrollen styrer du Copenhagen-høytaleren din enkelt, uansett hvor du er i rommet.



Vifa R2-fjernkontrollen følger ikke med i Copenhagen-boksen.  
Besøk [vifa.dk/shop](http://vifa.dk/shop) for mer informasjon om hvor du kan kjøpe Vifa R2-fjernkontrollen.

## SPESIFIKASJONER

Beskrivelse	Vifa®HOME – Copenhagen trådløs høytaler
Tekniske funksjoner	Bluetooth® Wireless Technology Qualcomm® aptX™ HD audio Wi-Fi B/G/N, 2,4GHz Apple AirPlay Kan brukes med DLNA DSP-signalbehandling Litium-ionbatteri Kraftbalanserte basshøytalere Seks-kanals effektforsterker
Driverenheter Diskantehøytaler	2 x 28 mm Vifa-driverenheter med myk membran og neodym-magnet.
Mellomtonehøytaler	2 x 50 mm Vifa-driverenheter med aluminiumskonus og neodym-magnet.
Basshøytaler	2 x 80 mm Vifa-driverenheter med flat sandwichkonus og neodym-magnet. Montert mekanisk, rygg mot rygg, i en kraftbalansert konfigurasjon støttet av 4 passive radiatorer.
Frekvensrespons	50Hz - 20kHz @ +/- 3 dB
Inngangsspenning	100–240V ~ 50/60Hz
Maksimalt standard strømforbruk	160 watt
Strømforbruk i hvilemodus	Mindre enn 0,5 watt
Ytelse	USB 5 volt/2,1A
Innganger	Bluetooth® Wireless Technology Qualcomm® aptX™ HD audio Wi-Fi Direct Kan kobles til Wi-Fi Optisk eller analog kabeltilkobling (3,5 mm minijack) Minnepinne
Dimensjoner (høyde/bredde/dybde)	268 mm / 362 mm / 90 mm
Nettovekt:	4,65 kg
Ramme	Trykkstøpt aluminium
Tekstil	Spesiellagd Kvadrat-stoff

# REGISTER AND TRADEMARKS

We encourage you to register your product at: [www.vifa.dk/register](http://www.vifa.dk/register)



"Made for iPod", "Made for iPhone", and "Made for iPad" mean that an electronic accessory has been designed to connect specifically to iPod, iPhone, or iPad, respectively, and has been certified by the developer to meet Apple performance standards. Apple is not responsible for the operation of this device or its compliance with safety and regulatory standards. Please note that the use of this accessory with iPod, iPhone, or iPad may affect wireless performance.

AirPlay, iPad, iPhone, iPod, iPod classic, iPod nano, iPod touch, and Retina are trademarks of Apple Inc., registered in the U.S. and other countries. iPad Air, iPad min, and Lightning are trademarks of Apple Inc. In Japan, The trademark "iPhone" is used with a license from Aiphone K.K.

AirPlay works with iPhone, iPad, and iPod touch with iOS 4.3.3 or later, Mac with OS X Mountain Lion or later, and PC with iTunes 10.2.2 or later. Supports iOS 7 or later for setup using Wireless Accessory Configuration.



The Spotify software is subject to third party licenses found here: [www.spotify.com/connect/third-party-licenses](http://www.spotify.com/connect/third-party-licenses).

## LISTEN OUT LOUD WITH SPOTIFY CONNECT

1. Connect your Copenhagen 2.0 to your wifi network
2. Open up the Spotify app on your phone, tablet or laptop using the same wifi network
3. Play a song and select Devices Available.
4. Select your Copenhagen 2.0 and start listening



The Wi-Fi CERTIFIED™ logo is a certification mark of Wi-Fi Alliance®.



The Bluetooth® word mark and logos are registered trademarks owned by Bluetooth SIG, Inc., and any use of such marks by Vifa Denmark A/S is under license. Other trademarks and trade names are those of their respective owners.



Qualcomm aptX HD

Qualcomm is a trademark of Qualcomm Incorporated, registered in the United States and other countries. aptX is a trademark of Qualcomm Technologies International, Ltd., registered in the United States and other countries.



The N-Mark is a trademark or registered trademark of NFC Forum, Inc. in the United States and in other countries.



Google Play and the Google Play logo are trademarks of Google Inc.



Vifa®HOME, Vifa®PLAY, Vifa®LINK and the logos are trademarks of Vifa Denmark A/S.

Besøk nettsiden vår for mer informasjon:  
[vifa.dk](http://vifa.dk)