

vifa

COPENHAGEN 2.0

Quick Guide - Model: VIFA012

日本語

IMPORTANT STATEMENTS:

This device complies with Part 15 of the FCC Rules. Its operation is subject to the following two conditions:

1. This device may not cause harmful interference, and
2. This device must accept any interference received, including interference that may cause undesired operation.

Cet appareil est conforme à la section 15 des réglementations de la FCC. Le fonctionnement de l'appareil est sujet aux deux conditions suivantes:

1. Cet appareil ne doit pas provoquer d'interférences néfastes, et
2. Cet appareil doit tolérer les interférences reçues, y compris celles qui risquent de provoquer un fonctionnement indésirable.

Note:

This product has been tested and found to comply with the limits for a Class B digital device, pursuant to Part 15 of the FCC Rules. These limits are designed to provide reasonable protection against harmful interference in a residential installation. This product generates, uses, and can radiate radio frequency energy and, if not installed and used in accordance with the instructions, may cause harmful interference to radio communications.

However, there is no guarantee that interference will not occur in a particular installation. If this product does cause harmful interference to radio or television reception, which can be determined by turning the equipment off and on, the user is encouraged to try to correct the interference by one or more of the following measures:

- Reorient or relocate the receiving antenna.
- Increase the separation between the equipment and receiver.
- Connect the equipment into an outlet on a circuit different from that to which the receiver is connected.
- Consult the dealer or an experienced radio/TV technician for help.

Changes or modifications not expressly approved by the party responsible for compliance could void the user's authority to operate the equipment.

This device complies with Industry Canada licence-exempt RSS standard(s). Operation is subject to the following two conditions:

1. This device may not cause interference, and
2. This device must accept any interference, including interference that may cause undesired operation of the device.

Le présent appareil est conforme aux CNR d'Industrie Canada applicables aux appareils radio-exemptés de licence. L'exploitation est autorisée aux deux conditions suivantes:

1. l'appareil ne doit pas produire de brouillage, et
2. l'utilisateur de l'appareil doit accepter tout brouillage radioélectrique subi, même si le brouillage est susceptible d'en compromettre le fonctionnement.

FCC/IC Radiation Exposure Statement

This equipment complies with FCC/IC RSS-102 radiation exposure limits set forth for an uncontrolled environment. This equipment should be installed and operated with minimum distance 20 cm between the radiator & your body.

Déclaration de la FCC et d'IC sur l'exposition aux radiations
Cet appareil est conforme à la norme RSS102 de la FCC/IC relative aux limites d'exposition aux radiations dans un environnement non contrôlé. Vous devez installer et utiliser cet appareil en respectant une distance minimale de 20 cm entre votre corps et l'élément rayonnant.

Vifa Denmark A/S
Mariendalsvej 2A
DK - 8800 Viborg
vifa.dk



The maximum ambient temperature should not exceed 40°C.

Vifa Denmark A/S hereby declares that the product Copenhagen 2.0 (VIFA012), which contains Bluetooth and Wi-Fi radio transceivers, complies with the essential requirements of EU directive 2014/53/EU (RED).

The radiated power for Bluetooth RF frequency range 2402-2480MHz is less than 10dBm.

The radiated power for Wi-Fi RF frequency range 2422-2472MHz is less than 20dBm.

The complete EU Declaration of Conformity can be downloaded from: www.vifa.dk/support

Firmware version:
Equal or later than System/3.6.4917.206 and BT/1.2

IMPORTANT SAFETY INSTRUCTIONS

Regulatory Safety Information

- 1 Read these instructions.
 - 2 Keep these instructions.
 - 3 Heed all warnings.
 - 4 Follow all instructions.
 - 5 Do not use this apparatus near water.
 - 6 Clean only with dry cloth.
 - 7 Do not block any ventilation openings. Install in accordance with the manufacturer's instructions.
 - 8 Do not install near any heat sources such as radiators, heat registers, stoves, or other apparatus (including amplifiers) that produce heat.
 - 9 Do not defeat the safety purpose of the polarized or grounding-type plug. A polarized plug has two blades with one wider than the other. A grounding type plug has two blades and a third grounding prong. The wide blade or the third prong are provided for your safety. If the provided plug does not fit into your outlet consult an electrician for replacement of the obsolete outlet.
 - 10 Protect the power cord from being walked-on or pinched particularly at plugs, convenience receptacles and the point where they exit from the apparatus.
 - 11 Only use attachments/accessories specified by the manufacturer.
 - 12 Use only with the cart, stand, tripod, bracket or table specified by the manufacturer or sold with the apparatus. When a cart is used, use caution when moving the cart/apparatus combination to avoid injury from tip-over.
 - 13 Unplug this apparatus during lightning storms or when unused for long periods of time.
 - 14 Refer all servicing to qualified service personnel. Servicing is required when the apparatus has been damaged in any way, such as power-supply cord or plug is damaged, liquid has been spilled or objects have fallen into the apparatus, the apparatus has been exposed to rain or moisture, does not operate normally or has been dropped.
 - 15 To completely disconnect unit power from the AC mains, disconnect the unit's power cord from the mains socket.
 - 16 Important! This equipment is not intended to be used on soft support (like beddings, Blankets etc.)
 - 17 The socket-outlet shall be easily accessible.
 - 18 Disposal of a battery into fire or a hot oven, or mechanically crushing or cutting of a battery can result in an explosion
 - 19 High or low extreme temperatures that a battery can be subjected to during use is 10°C - 45°C, storage -20°C - 40°C or transportation 10°C - 45°C, and low air pressure is 86-106kPa at 2000m. high altitude.
 - 20 Leaving a battery in an extremely high temperature surrounding environment that can result in an explosion or the leakage of flammable liquid or gas.
 - 21 Battery subjected to extremely low air pressure that may result in an explosion or the leakage of flammable liquid or gas.
 - 22 Product label affixed to the bottom of the product.
 - 23 **CAUTION:** Danger of explosion if battery is incorrectly replaced. Replace only with the same or equivalent type.
 - 24 **WARNING:** The Battery (battery pack or batteries installed) shall not be exposed to excessive heat such as sunshine, fire or the like.
 - 25 **WARNING:** The main plug shall remain readily operable.
 - 26 Keep minimum distances 1cm around the apparatus for sufficient ventilation.
 - 27 The ventilation should not be impeded by covering the ventilation openings with items, such as newspapers, table-cloths, curtains, etc.
 - 28 Attention should be drawn to the environmental aspects of battery disposal.
 - 29 The use of apparatus in tropical and/or moderate climates.
 - 30 Risk of explosion if the battery is replaced by an incorrect type.
- WARNING:**
- To reduce the risk of fire and electric shock do not expose this apparatus to rain or moisture.
 - Do not place objects filled with liquids such as vases on the apparatus.
 - Do not open apparatus. There are no user-serviceable parts inside. Risk of electric shock inside.
 - The apparatus shall not be exposed to dripping or splashing.
 - No naked flame sources, such as lighted candles, such as lighted candles, should be placed on the apparatus.



The lightning flash and arrow head within the triangle is a warning sign alerting you of dangerous voltage inside the product



The exclamation point within the triangle is a warning sign alerting you of important instructions accompanying the product.

お選びいただきありがとうございます。

どの部屋でも、どなたでも、どのソースでも。
COPENHAGEN 2.0は Vifa®HOMEシステムです。
あなたの家のあらゆる場所をカバーする
究極のサウンド体験。

お楽しみください！

COPENHAGEN

内容物	6
はじめに	7

COPENHAGEN 内容物

Wi-Fi ネットワークへの接続	8
Bluetooth® への接続	9
ケーブル での接続	10

Vifa®HOME

Vifa®PLAY アプリの操作	11
一時停止/ミュート	12
Vifa®LINK	13

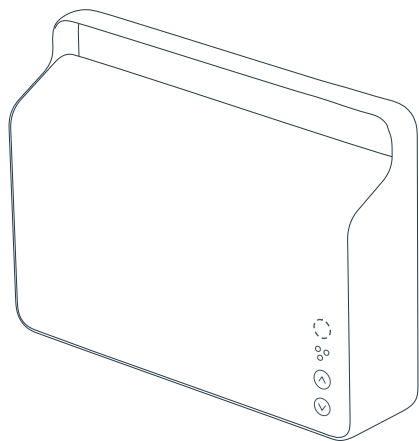
工場出荷時の初期設定	14
COPENHAGENをリセットする	15

リモコン	16
仕様	19
商標について	20



他言語でのクイックガイドはこちらをご覧ください。
www.vifa.dk/support

内容物

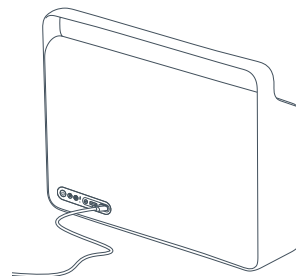


Vifa COPENHAGEN、電源ケーブル、AUX 3.5 mm ミニジャックケーブル、トラベルポーチ、クイックガイド、保証書

はじめに

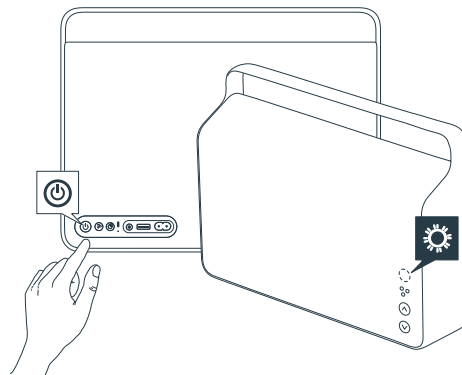
1

付属の電源ケーブルでCOPENHAGEN本体を壁コンセントに接続します。



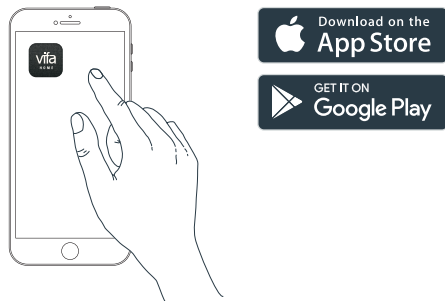
2

電源ボタンを長押しすると電源が入り、前面のSTATUSインジケータが点灯します。その後、約1分経過すると動作可能状態になります。速い白点滅からゆっくりとした白点滅に変化すると。

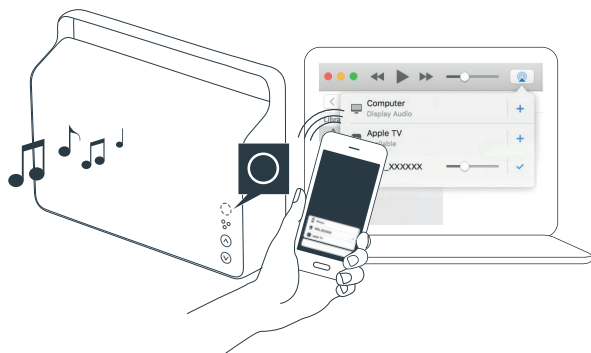


WI-FI ネットワークへの接続

お手持ちの携帯端末にVifa®HOMEアプリ（無料）をダウンロードしてインストールします。コンピュータやその他のデバイスをセットアップに使用するなど、その他の設定については、弊社までお問い合わせください。www.vifa.dk/support

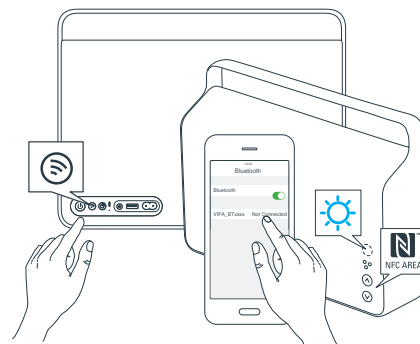


セットアップ中に、スピーカーをインターネットに接続します。
Wi-Fiパスワードが設定されていることを確認してください。
お手元のCOPENHAGENが接続されるとSTATUSインジケータ スペース削除 します。
これでストリーミングを開始することができます。

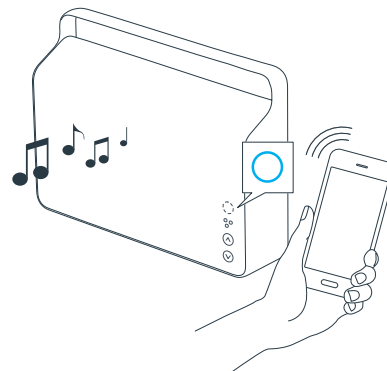


BLUETOOTH® への接続

CONNECTボタンを短く押すとSTATUSインジケータが青色に点滅します。

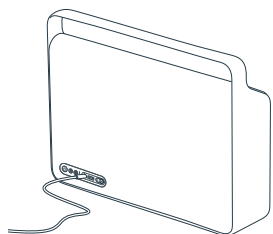


再生が開始されるとSTATUSインジケータが青色に点灯します。

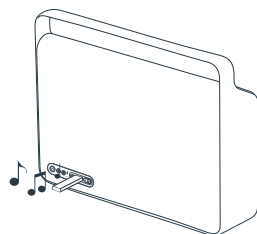


ケーブル での接続

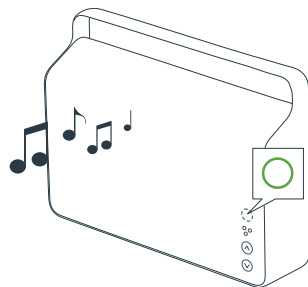
での接続で再生するとSTATUSインジケータは緑色に点灯します。
ケーブルやUSBメモリー。



AUX 3.5 mm ミニジャックケーブル、
または光ケーブル



USBメモリー



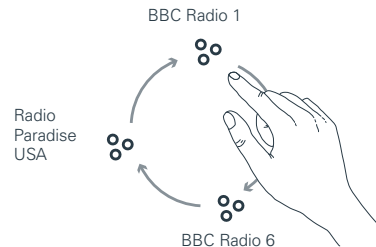
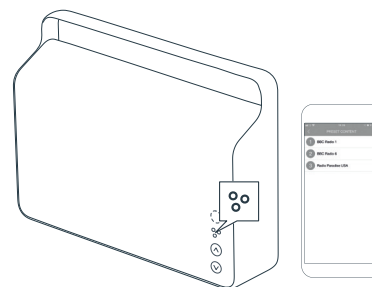
Vifa®PLAY

Vifa®PLAYボタンを押すと、お気に入りの音楽/ラジオ局にすぐにアクセスできます。

COPENHAGENスピーカーをWi-Fiネットワークに接続し、Vifa®PLAYボタンを押すことで、あらかじめ設定されたラジオ局のストリーミングを開始します。

Vifa®PLAYボタンをもう一度押すと、次の設定されたラジオ局にジャンプします。

Vifa®PLAYの設定を変更するには、Vifa®HOMEアプリを使用します。

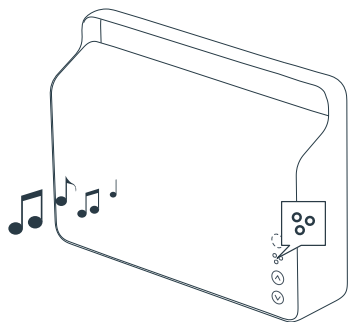


注意：Vifa®PLAY アプリはスピーカーがWi-Fiネットワークに接続されている時のみ使用可能です。
(ステーションはVifaで登録済みです。Vifa®HOMEアプリで編集できます)

一時停止/ミュート

Vifa®PLAYボタンを短く押すことで、一時停止/ミュートにできます。

もう一度短く押すと、再生され、ミュートが解除されます。



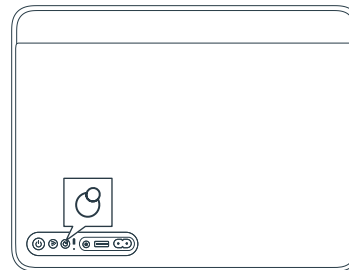
Vifa®LINK

Vifa®LINK は、別のVifa®HOMEスピーカーをそっとクリックすることで相互接続ができる機能です。

Vifa®LINKボタンを短く押して、COPENHAGENと別のVifa®HOMEスピーカーを接続します。

Vifa®LINKボタンを押し続けると、リンクが中断されます。

2つ以上のVifa®HOMEスピーカーをリンクするには、Vifa®HOMEアプリを使用します。

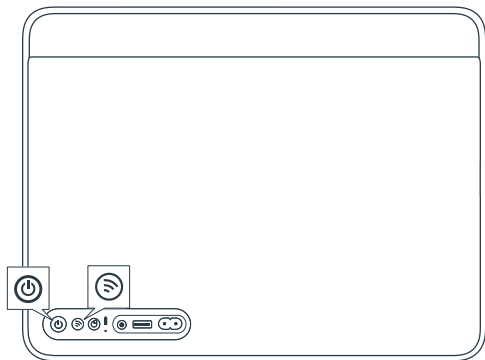


工場出荷時の初期設定

Copenhagenのソフトウェアを工場出荷時の設定にリセットします。

工場出荷時の初期設定にするには-
STATUSが赤、緑、青で点灯するまで、電源とCONNECTボタンを同時に押し続けます。
ボタンを離すと、Copenhagenは工場出荷時の初期設定に戻ります。

- 工場出荷時の初期設定にすると、すべてのユーザー設定が失われます。

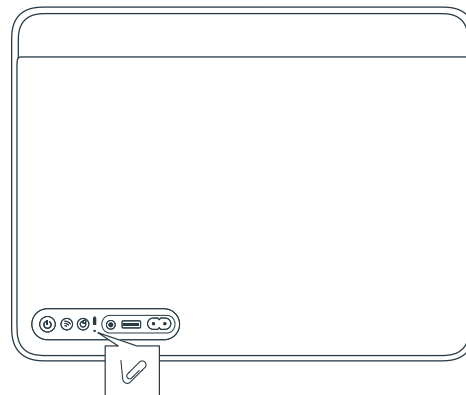


COPENHAGENをリセットする

Copenhagenがフリーズした場合に使用します。

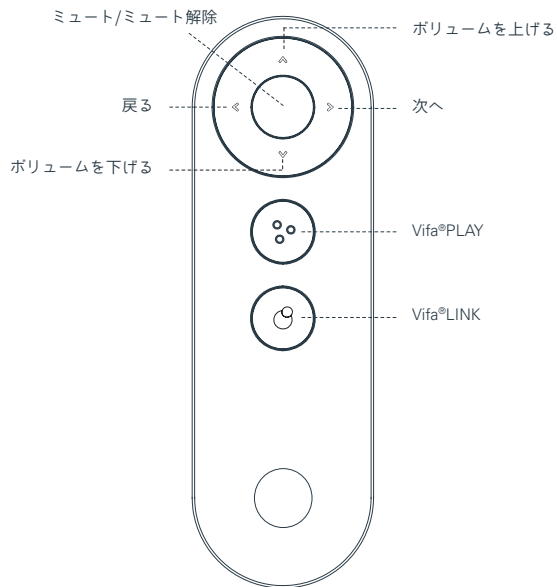
Copenhagenをリセットするには、クリップの先などでリセットボタンを短かく押し
てください。

- ユーザー設定は失われません。



VIFA R2 リモコン

Vifa R2リモコンを使用すると、部屋のどこからでもCOPENHAGENを簡単にコントロールできます。



Vifa R2リモコンはCOPENHAGENのセットには含まれていません。

14 Vifa R2リモコンを購入する場所の詳細については、弊社または販売店までお問合せください。

仕様

品目	ポータブルワイヤレススピーカー
技術的な機能	Bluetooth® Wireless Technology Qualcomm® aptX™ HD audio Wi-Fi B/G/N、2.4GHz Apple AirPlay DLNA準拠 リチウムイオンバッテリー DSP信号処理による フォースバランスウーファー駆動 6ch ハイパフォーマンスパワーアンプ内蔵
ドライブユニット トウィーター	2 x 28 mm Vifa製ソフトドーム&ネオジウムマグネット
ミッドレンジ	2 x 50 mm Vifa 製アルミコーン&ネオジウムマグネット
ウーファー	2 x 80 mm Vifa製平面積層型&ネオジウムマグネット 4つのパッシブブラスエータで低域を増強すると同時に、フォースバランス構成で機械的に背中合わせに実装
再生周波数特性	50Hz - 20kHz @ ±3dB
AC電圧動作範囲	AC 100-240V ~ 50/60Hz
最大消費電力	160W
スタンバイ時消費電力	0.5W以下
出力	USB 5V/2.1A (AC電源接続時) 0.5 A (バッテリー動作時)
入力	Bluetooth® Wireless Technology Qualcomm® aptX™ HD audio Wi-Fi ダイレクト Wi-Fi ネットワーク/TOS光入力 or アナログ入力 (3.5mmミニジャック) USB端子
サイズ (H/W/D)	H268 mm / W362 mm / D90 mm
重量	4.65 kg
エンクロージャー テキスタイル	アルミニウム製 カスタムメイドKvadrat製テキスタイル

REGISTER AND TRADEMARKS

We encourage you to register your product at: www.vifa.dk/register



"Made for iPod", "Made for iPhone", and "Made for iPad" mean that an electronic accessory has been designed to connect specifically to iPod, iPhone, or iPad, respectively, and has been certified by the developer to meet Apple performance standards. Apple is not responsible for the operation of this device or its compliance with safety and regulatory standards. Please note that the use of this accessory with iPod, iPhone, or iPad may affect wireless performance.

AirPlay, iPad, iPhone, iPod, iPod classic, iPod nano, iPod touch, and Retina are trademarks of Apple Inc., registered in the U.S. and other countries. iPad Air, iPad min, and Lighting are trademarks of Apple Inc. In Japan, The trademark "iPhone" is used with a license from Aiphone K.K.

AirPlay works with iPhone, iPad, and iPod touch with iOS 4.3.3 or later, Mac with OS X Mountain Lion or later, and PC with iTunes 10.2.2 or later. Supports iOS 7 or later for setup using Wireless Accessory Configuration.



The Spotify software is subject to third party licenses found here: www.spotify.com/connect/third-party-licenses.

LISTEN OUT LOUD WITH SPOTIFY CONNECT

1. Connect your Copenhagen 2.0 to your wifi network
2. Open up the Spotify app on your phone, tablet or laptop using the same wifi network
3. Play a song and select Devices Available.
4. Select your Copenhagen 2.0 and start listening



The Wi-Fi CERTIFIED™ logo is a certification mark of Wi-Fi Alliance®.



The Bluetooth® word mark and logos are registered trademarks owned by Bluetooth SIG, Inc., and any use of such marks by Vifa Denmark A/S is under license. Other trademarks and trade names are those of their respective owners.



Qualcomm® aptX™ HD

Qualcomm is a trademark of Qualcomm Incorporated, registered in the United States and other countries. aptX is a trademark of Qualcomm Technologies International, Ltd., registered in the United States and other countries.



The N-Mark is a trademark or registered trademark of NFC Forum, Inc. in the United States and in other countries.



Google Play and the Google Play logo are trademarks of Google Inc.



Vifa®HOME, Vifa®PLAY, Vifa®LINK and the logos are trademarks of Vifa Denmark A/S.

For more information please visit our website at
vifa.dk